



Our *passion* is enclosures.



aluNORM

Multi-variable enclosures made of aluminium

Technical data

alUNORM AS



AS variant



External mounting bracket
AS 080 - AS 166



External mounting feet
AS 200 - AS 324



External hinge



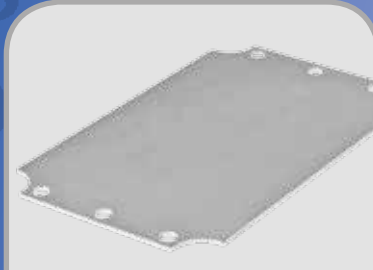
Internal hinge



Hold hinge



Mounting rail and terminals



Mounting plate

Enclosure: Die-cast aluminium EN AN-44300 DIN EN 1706 (GD AL SI 12 / DIN 1725). 1° mould slope for casting ejection, internal measures diminishing circulatory towards enclosure bottom by 1°.

Fastening: Space-saving single-channel technology

Components: Fastening thread M4/M6 in upper and lower section.

Ingress protection: IP66 / EN 60529

Gasket: TPE moulded gasket, silicone-free (-40°C to +120°C)
Chloroprene (CR) Gasket (-30°C to +90°C)

Lid screws: Stainless steel 1.4567 (V2A), captive

Surface: Powder coating RAL 7032, silky grey

Optionally available:

External mounting: Die-cast zinc (Zn Al 4 Cu 1)

Mounting plates: Sheet steel, galvanised

Gasket: Silicone gasket (-50°C to +140°C)
EMC gasket (-55°C to +160°C)

Ingress protection: IP67 / EN 60529

Surface: Corrosion protection, special colours

Further options, see delivery overview.

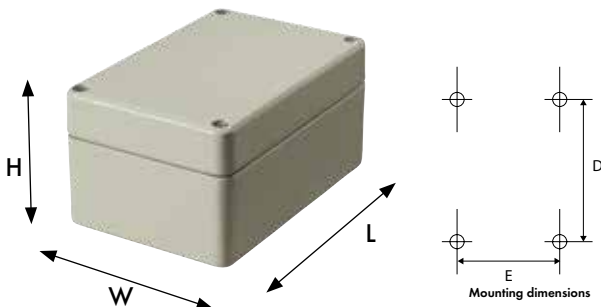
Delivery overview aluNORM AS

Type	Mat. no.	L	W	H	D	E	g	M	D	A	B	L	T	S	IS	HS	EMC	67
* AS 060	100.060.000	50	65	40	38	53	130	●	●	○	●	●	●	○	○	○	●	●
* AS 062	100.062.000	65	65	40	53	53	170	●	●	○	●	●	●	○	○	○	●	●
* AS 064	100.064.000	100	65	40	88	53	220	●	●	○	●	●	●	○	○	○	●	●
* AS 066	100.066.000	150	65	40	138	53	310	●	●	○	●	●	●	○	○	○	●	●
* AS 080	100.080.000	80	80	60	67	67	320	●	●	●	●	●	●	○	○	○	●	●
* AS 082	100.082.000	120	80	60	107	67	460	●	●	●	●	●	●	○	○	○	●	●
* AS 084	100.084.000	160	80	60	147	67	610	●	●	●	●	●	●	○	○	○	●	●
* AS 100	100.100.000	100	100	80	87	87	550	●	●	●	○	●	●	●	○	●	●	●
* AS 102	100.102.000	150	100	80	137	87	730	●	●	●	○	●	●	●	○	●	●	●
* AS 104	100.104.000	200	100	80	187	87	910	●	●	●	○	●	●	●	○	●	●	●
* AS 120	100.120.000	120	120	100	102	102	1.070	●	●	●	○	●	●	●	●	●	●	●
* AS 122	100.122.000	180	120	100	162	102	1.310	●	●	●	○	●	●	●	●	●	●	●
* AS 124	100.124.000	240	120	100	222	102	1.680	●	●	●	○	●	●	●	●	●	●	●
* AS 160	100.160.000	160	160	100	142	142	1.520	●	●	●	○	●	●	●	●	●	●	●
* AS 162	100.162.000	240	160	100	222	142	1.980	●	●	●	○	●	●	●	●	●	●	●
AS 164	100.164.000	320	160	100	302	142	2.480	●	●	●	○	●	●	●	●	●	●	●
AS 166	100.166.000	480	160	100	462	142	3.900	●	●	●	○	●	●	●	●	●	●	●
AS 200	100.200.000	200	200	120	180	180	2.480	●	●	●	○	●	●	●	●	●	●	●
AS 202	100.202.000	300	200	120	280	180	3.250	●	●	●	○	●	●	●	●	●	●	●
AS 204	100.204.000	400	200	120	380	180	4.700	●	●	●	○	●	●	●	●	●	●	●
AS 240	100.240.000	240	240	120	220	220	3.400	●	●	●	○	●	●	●	●	●	●	●
AS 242	100.242.000	360	240	120	340	220	4.000	●	●	●	○	●	●	●	●	●	●	●
AS 244	100.244.000	480	240	120	460	220	6.100	●	●	●	○	●	●	●	●	●	●	●
AS 320	100.320.000	320	320	120	300	300	4.900	●	●	●	○	●	●	●	●	●	●	●
AS 322	100.322.000	480	320	120	460	300	6.600	●	●	●	○	●	●	●	●	●	●	●
AS 324	100.324.000	640	320	120	620	300	8.700	●	●	●	○	●	●	●	●	●	●	●

* TPE moulded gasket

□ Standard ● Available ○ Not available

Approvals:



Technical data

aluNORM AF



Enclosure: Die-cast aluminium EN AN-44300 DIN EN 1706 (GD AL SI 12 / DIN 1725). 1° mould slope for casting ejection, internal measures diminishing circulatory towards enclosure bottom by 1°.

Fastening: Space-saving single-channel technology

Components: Fastening thread M4/M6 in upper and lower section.

Ingress protection: IP66 / EN 60529

Gasket: TPE moulded gasket, silicone-free (-40°C to +120°C)
Chloroprene (CR) Gasket (-30°C to +90°C)

Lid screws: Stainless steel 1.4567 (V2A), captive

Surface: Powder coating RAL 7032, silky grey

Optionally available:

External mounting: Die-cast zinc (Zn Al 4 Cu 1)

Mounting plates: Sheet steel, galvanised

Gasket: Silicone gasket (-50°C to +140°C)
EMC gasket (-55°C to +160°C)

Ingress protection: IP67 / EN 60529

Surface: Corrosion protection, special colours

Further options, see delivery overview.

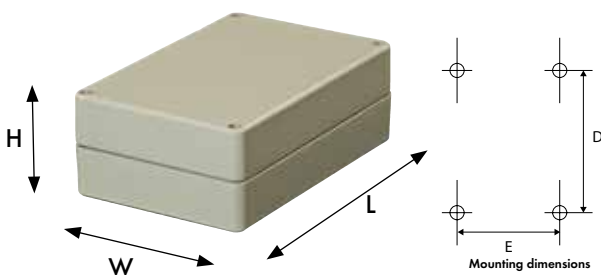
Delivery overview aluNORM AF

Type	Mat. no.	L	W	H	D	E	g	M	D	A	Q	B	L	T	S	HS	EMC	67
* AF 080	102.080.000	80	80	40	67	67	240	●	●	●	●	●	●	○	○	○	●	●
* AF 082	102.082.000	120	80	40	107	67	330	●	●	●	●	●	●	○	○	○	●	●
AF 084	102.084.000	160	80	40	147	67	400	●	○	●	●	●	●	○	○	○	●	○
* AF 100	102.100.000	100	100	54	87	87	420	●	●	●	●	○	●	●	○	○	●	●
* AF 102	102.102.000	150	100	54	137	87	540	●	●	●	●	○	●	●	○	○	●	●
AF 104	102.104.000	200	100	54	187	87	690	●	○	●	●	○	●	●	○	○	●	○
AF 120	102.120.000	120	120	66	102	102	780	●	○	●	●	○	●	●	●	●	●	○
* AF 122	102.122.000	180	120	66	162	102	1.010	●	●	●	●	○	●	●	●	●	●	●
* AF 124	102.124.000	240	120	66	222	102	1.260	●	●	●	●	○	●	●	●	●	●	●
AF 160	102.160.000	160	160	66	142	142	1.130	●	○	●	●	○	●	●	●	●	●	○
* AF 162	102.162.000	240	160	66	222	142	1.560	●	●	●	●	○	●	●	●	●	●	●
AF 164	102.164.000	320	160	66	302	142	1.910	●	○	●	●	○	●	●	●	●	●	○
AF 166	102.166.000	480	160	66	462	142	3.030	●	○	●	●	○	●	●	●	●	●	○
AF 200	102.200.000	200	200	80	180	180	1.780	●	○	●	●	○	●	●	●	●	●	○
AF 202	102.202.000	300	200	80	280	180	2.380	●	○	●	●	○	●	●	●	●	●	○
AF 204	102.204.000	400	200	80	380	180	3.560	●	○	●	●	○	●	●	●	●	●	○
AF 240	102.240.000	240	240	80	220	220	2.380	●	○	●	●	○	●	●	●	●	●	○
AF 242	102.242.000	360	240	80	340	220	3.630	●	○	●	●	○	●	●	●	●	●	○
AF 244	102.244.000	480	240	80	460	220	4.690	●	○	●	●	○	●	●	●	●	●	○
AF 320	102.320.000	320	320	80	300	300	4.000	●	○	●	●	○	●	●	●	●	●	○
AF 322	102.322.000	480	320	80	460	300	5.650	●	○	●	●	○	●	●	●	●	●	○
AF 324	102.324.000	640	320	80	620	300	7.350	●	○	●	●	○	●	●	●	●	●	○

* TPE moulded gasket

□ Standard ● Available ○ Not available

Approvals:



Technical data

aluNORM AD



AD variant



External mounting bracket
AD 080 - AD 166



External mounting feet
AD 200 - AD 324



External hinge



Internal hinge



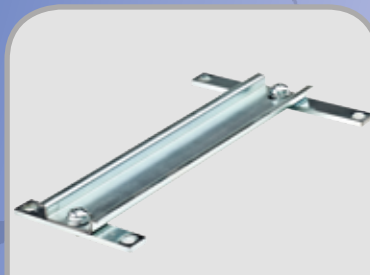
Hold hinge



Mounting rail and terminals



Mounting plate



Cross rail

Enclosure: Die-cast aluminium EN AN-44300 DIN EN 1706 (GD AL SI 12 / DIN 1725). 1° mould slope for casting ejection, internal measures diminishing circulatory towards enclosure bottom by 1°.

Fastening: Space-saving single-channel technology

Components: Fastening thread M4/M6 in upper and lower section.

Ingress protection: IP66 / EN 60529

Gasket: TPE moulded gasket, silicone-free (-40°C to +120°C)
Chloroprene (CR) Gasket (-30°C to +90°C)

Lid screws: Stainless steel 1.4567 (V2A), captive

Surface: Powder coating RAL 7032, silky grey

Optionally available:

External mounting: Die-cast zinc (Zn Al 4 Cu 1)

Mounting plates: Sheet steel, galvanised

Gasket: Silicone gasket (-50°C to +140°C)
EMC gasket (-55°C to +160°C)

Ingress protection: IP67 / EN 60529

Surface: Corrosion protection, special colours

Further options, see delivery overview.

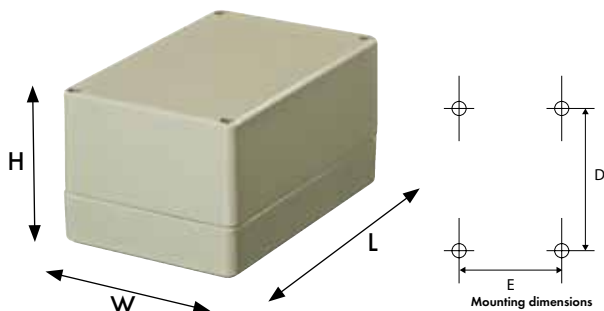
Delivery overview aluNORM AD

Type	Mat. no.	L	W	H	D	E	g	M	D	A	Q	B	L	T	S	IS	HS	EMC	67
* AD 080	101.080.000	80	80	60	67	67	320	●	●	●	●	●	●	●	○	○	○	●	●
* AD 082	101.082.000	120	80	60	107	67	460	●	●	●	●	●	●	●	○	○	○	●	●
* AD 084	101.084.000	160	80	60	147	67	610	●	●	●	●	●	●	●	○	○	○	●	●
* AD 100	101.100.000	100	100	80	87	87	550	●	●	●	●	○	●	●	●	○	●	●	●
* AD 102	101.102.000	150	100	80	137	87	730	●	●	●	●	○	●	●	●	○	●	●	●
* AD 104	101.104.000	200	100	80	187	87	910	●	●	●	●	○	●	●	●	○	●	●	●
* AD 120	101.120.000	120	120	100	102	102	1.070	●	●	●	●	○	●	●	●	●	●	●	●
* AD 122	101.122.000	180	120	100	162	102	1.310	●	●	●	●	○	●	●	●	●	●	●	●
* AD 124	101.124.000	240	120	100	222	102	1.680	●	●	●	●	○	●	●	●	●	●	●	●
* AD 160	101.160.000	160	160	100	142	142	1.520	●	●	●	●	○	●	●	●	●	●	●	●
* AD 162	101.162.000	240	160	100	222	142	1.980	●	●	●	●	○	●	●	●	●	●	●	●
AD 164	101.164.000	320	160	100	302	142	2.480	●	●	●	●	○	●	●	●	●	●	●	●
AD 166	101.166.000	480	160	100	462	142	3.900	●	●	●	●	○	●	●	●	●	●	●	●
AD 200	101.200.000	200	200	120	180	180	2.480	●	●	●	●	○	●	●	●	●	●	●	●
AD 202	101.202.000	300	200	120	280	180	3.250	●	●	●	●	○	●	●	●	●	●	●	●
AD 204	101.204.000	400	200	120	380	180	4.700	●	●	●	●	○	●	●	●	●	●	●	●
AD 240	101.240.000	240	240	120	220	220	3.400	●	●	●	●	○	●	●	●	●	●	●	●
AD 242	101.242.000	360	240	120	340	220	4.000	●	●	●	●	○	●	●	●	●	●	●	●
AD 244	101.244.000	480	240	120	460	220	6.100	●	●	●	●	○	●	●	●	●	●	●	●
AD 320	101.320.000	320	320	120	300	300	4.900	●	●	●	●	○	●	●	●	●	●	●	●
AD 322	101.322.000	480	320	120	460	300	6.600	●	●	●	●	○	●	●	●	●	●	●	●
AD 324	101.324.000	640	320	120	620	300	8.700	●	●	●	●	○	●	●	●	●	●	●	●

* TPE moulded gasket

□ Standard ● Available ○ Not available

Approvals:



Technical data

alUNORM AH



AH variant



External mounting bracket
AH 100 - AH 166



External mounting feet
AH 200 - AH 244



External hinge



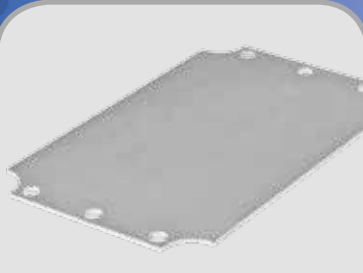
Internal hinge



Hold hinge



Mounting rail and terminals



Mounting plate

Enclosure: Die-cast aluminium EN AN-44300 DIN EN 1706 (GD AL SI 12 / DIN 1725). 1° mould slope for casting ejection, internal measures diminishing circulatory towards enclosure bottom by 1°.

Fastening: Space-saving single-channel technology

Components: Fastening thread M4/M6 in upper and lower section.

Ingress protection: IP66 / EN 60529

Gasket: TPE moulded gasket, silicone-free (-40°C to +120°C)
Chloroprene (CR) Gasket (-30°C to +90°C)

Lid screws: Stainless steel 1.4567 (V2A), captive

Surface: Powder coating RAL 7032, silky grey

Optionally available:

External mounting: Die-cast zinc (Zn Al 4 Cu 1)

Mounting plates: Sheet steel, galvanised

Gasket: Silicone gasket (-50°C to +140°C)
EMC gasket (-55°C to +160°C)

Ingress protection: IP67 / EN 60529

Surface: Corrosion protection, special colours

Further options, see delivery overview.

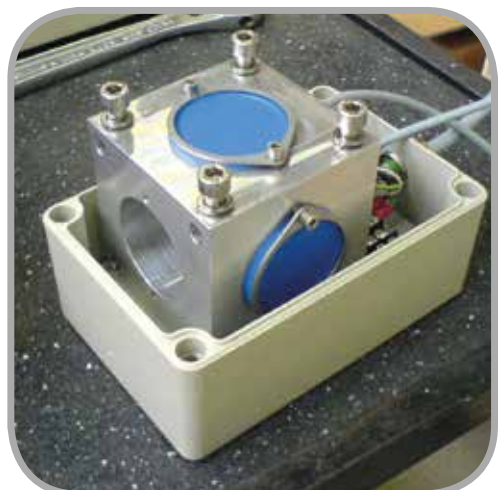
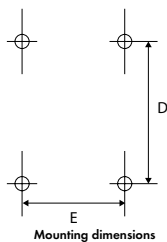
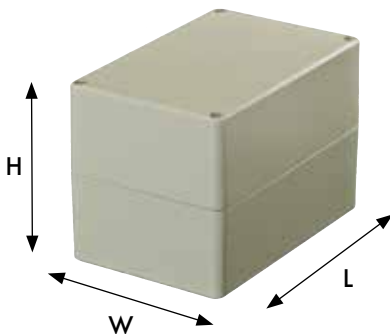
Delivery overview aluNORM AH

Type	Mat. no.	L	W	H	D	E	g	M	D	A	L	T	S	HS	EMC	67
* AH 100	103.100.000	100	100	106	87	87	630	●	●	●	●	●	●	●	●	●
AH 102	103.102.000	150	100	106	137	87	760	●	○	●	●	●	●	●	○	○
AH 104	103.104.000	200	100	106	187	87	940	●	○	●	●	●	●	●	○	○
AH 120	103.120.000	120	120	134	102	102	1.280	●	○	●	●	●	●	●	○	○
AH 122	103.122.000	180	120	134	162	102	1.560	●	○	●	●	●	●	●	○	○
AH 124	103.124.000	240	120	134	222	102	2.000	●	○	●	●	●	●	●	○	○
* AH 160	103.160.000	160	160	134	142	142	1.810	●	●	●	●	●	●	●	●	●
AH 162	103.162.000	240	160	134	222	142	2.300	●	○	●	●	●	●	●	○	○
AH 164	103.164.000	320	160	134	302	142	2.950	●	○	●	●	●	●	●	○	○
AH 166	103.166.000	480	160	134	462	142	4.640	●	○	●	●	●	●	●	○	○
AH 200	103.200.000	200	200	159	180	180	2.950	●	○	●	●	●	●	●	○	○
AH 202	103.202.000	300	200	159	280	180	3.880	●	○	●	●	●	●	●	○	○
AH 204	103.204.000	400	200	159	380	180	5.600	●	○	●	●	●	●	●	○	○
AH 240	103.240.000	240	240	159	220	220	4.050	●	○	●	●	●	●	●	○	○
AH 242	103.242.000	360	240	159	340	220	4.760	●	○	●	●	●	●	●	○	○
AH 244	103.244.000	480	240	159	460	220	7.260	●	○	●	●	●	●	●	○	○

* TPE moulded gasket

□ Standard ● Available ○ Not available

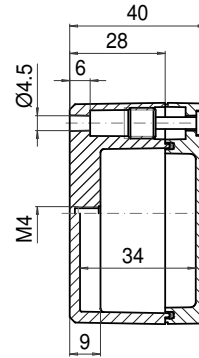
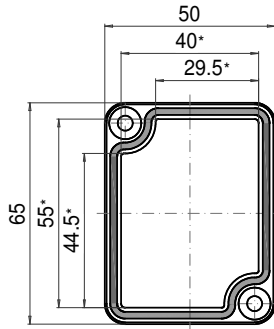
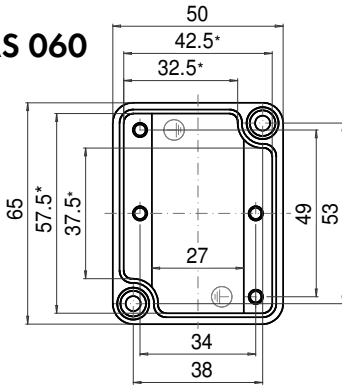
Approvals:



ROLEC Attachment and mounting dimensions

aluNORM AS

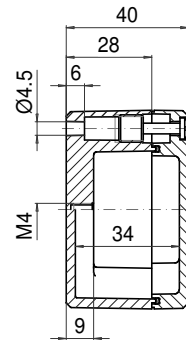
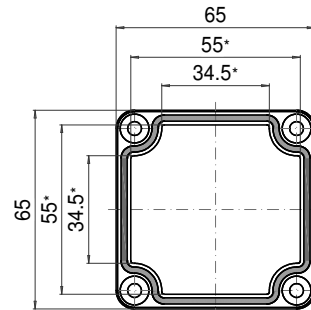
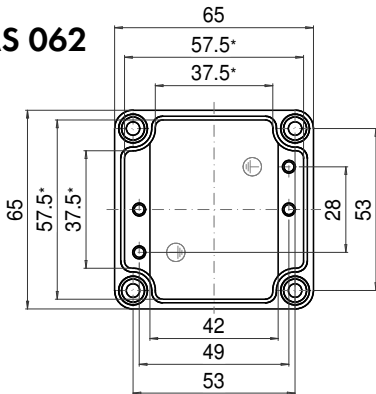
AS 060



Maximum number of cable glands per enclosure side			
A	B	C	D
PG 7	2	1	
PG 9	1	1	
PG 11	1		
PG 13,5	1		
PG 16			
PG 21			
PG 29			
PG 36			
PG 42			
PG 48			

* Please note: Mould slope for casting ejection, dimensions in the amount of the bottom!

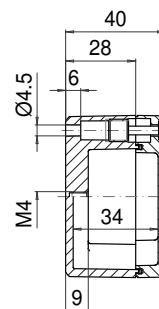
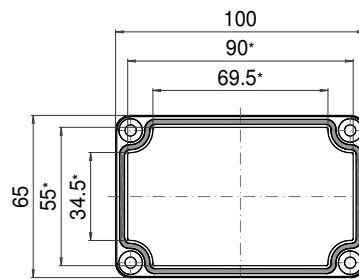
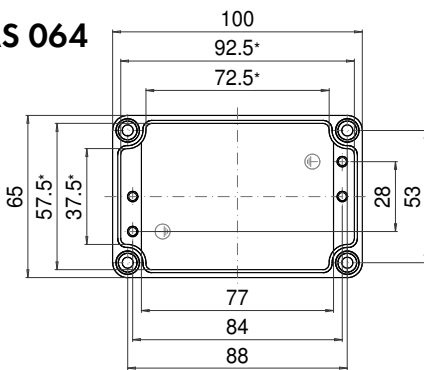
AS 062



Maximum number of cable glands per enclosure side			
A	B	C	D
PG 7	2	2	
PG 9	1	1	
PG 11	1		
PG 13,5	1		
PG 16			
PG 21			
PG 29			
PG 36			
PG 42			
PG 48			

* Please note: Mould slope for casting ejection, dimensions in the amount of the bottom!

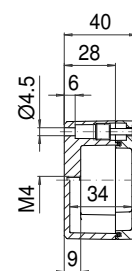
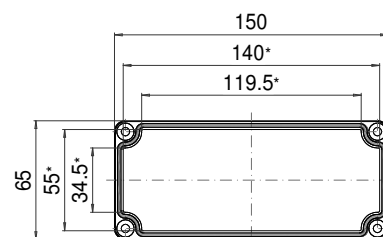
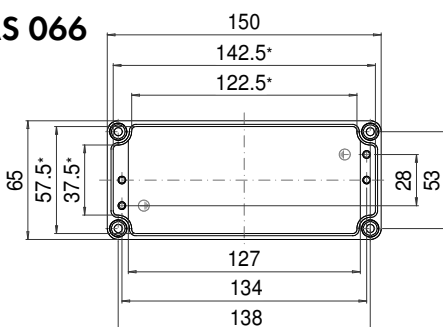
AS 064



Maximum number of cable glands per enclosure side			
A	B	C	D
PG 7	4	2	
PG 9	3	1	
PG 11	3		
PG 13,5	2		
PG 16			
PG 21			
PG 29			
PG 36			
PG 42			
PG 48			

* Please note: Mould slope for casting ejection, dimensions in the amount of the bottom!

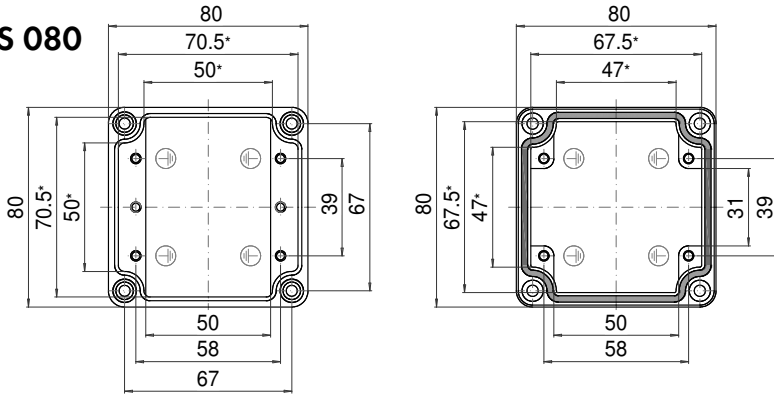
AS 066



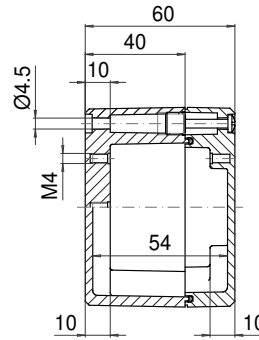
Maximum number of cable glands per enclosure side			
A	B	C	D
PG 7	7	2	
PG 9	5	1	
PG 11	4		
PG 13,5	4		
PG 16			
PG 21			
PG 29			
PG 36			
PG 42			
PG 48			

* Please note: Mould slope for casting ejection, dimensions in the amount of the bottom!

AS 080

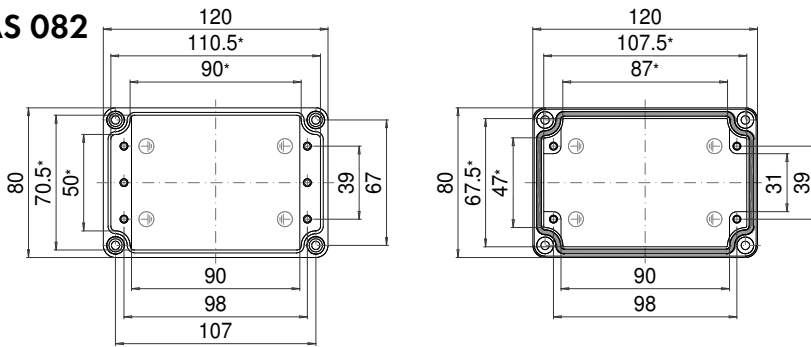


* Please note: Mould slope for casting ejection, dimensions in the amount of the bottom!

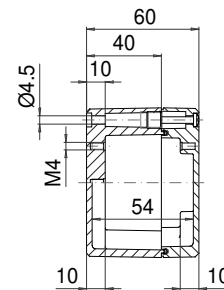


Maximum number of cable glands per enclosure side			
A	B	C	D
PG 7	6	4	
M 16	PG 9	3	2
	PG 11	2	2
M 20	PG 13,5	2	2
	PG 16	1	1
M 25	PG 21	1	
M 32	PG 29		
M 40	PG 36		
M 50	PG 42		
M 63	PG 48		

AS 082

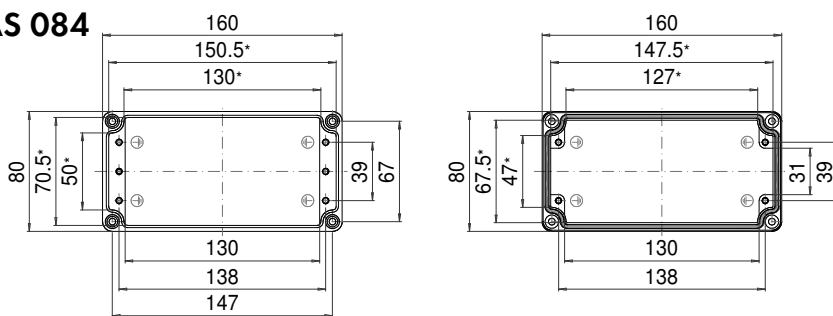


* Please note: Mould slope for casting ejection, dimensions in the amount of the bottom!

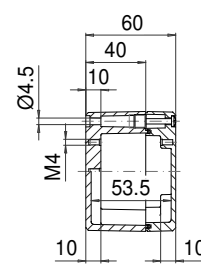


Maximum number of cable glands per enclosure side			
A	B	C	D
PG 7	10	4	
M 16	PG 9	7	2
	PG 11	3	2
M 20	PG 13,5	3	2
	PG 16	2	1
M 25	PG 21	2	
M 32	PG 29		
M 40	PG 36		
M 50	PG 42		
M 63	PG 48		

AS 084

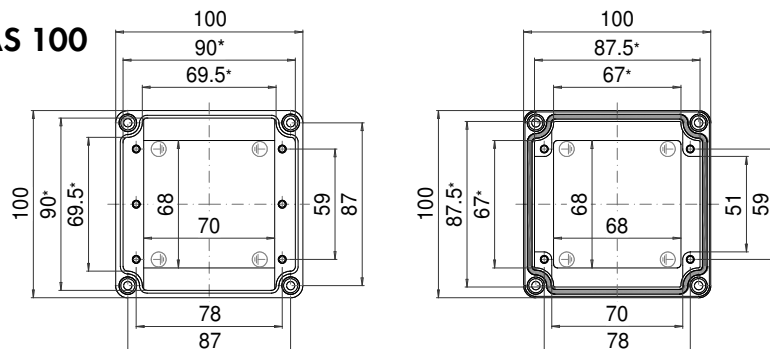


* Please note: Mould slope for casting ejection, dimensions in the amount of the bottom!

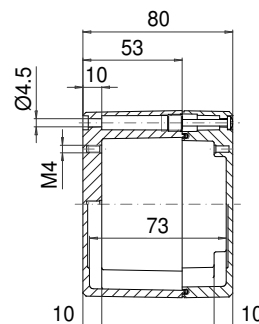


Maximum number of cable glands per enclosure side			
A	B	C	D
PG 7	14	4	
M 16	PG 9	11	2
	PG 11	5	2
M 20	PG 13,5	4	2
	PG 16	4	1
M 25	PG 21	3	
M 32	PG 29		
M 40	PG 36		
M 50	PG 42		
M 63	PG 48		

AS 100



* Please note: Mould slope for casting ejection, dimensions in the amount of the bottom!

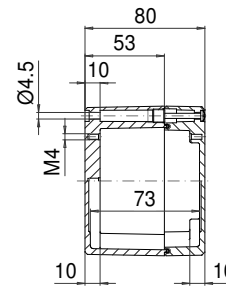
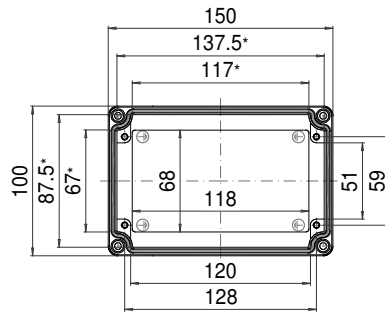
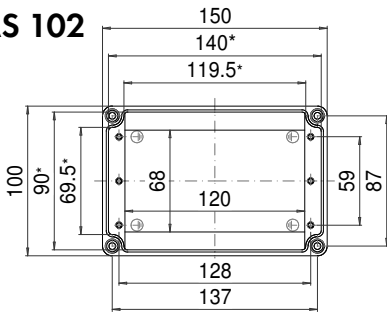


Maximum number of cable glands per enclosure side			
A	B	C	D
PG 7	11	8	
M 16	PG 9	6	5
	PG 11	5	3
M 20	PG 13,5	4	3
	PG 16	2	2
M 25	PG 21	2	2
M 32	PG 29	1	1
M 40	PG 36		
M 50	PG 42		
M 63	PG 48		

ROLEC Attachment and mounting dimensions

aluNORM AS

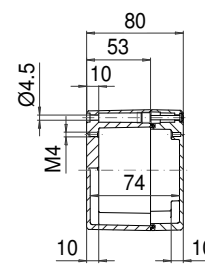
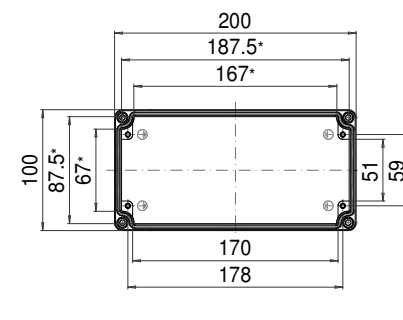
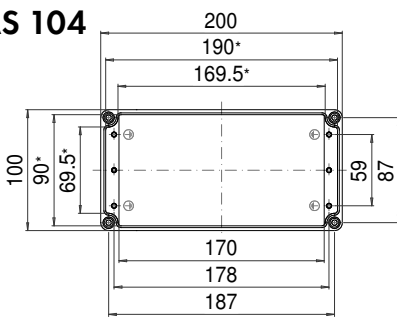
AS 102



Maximum number of cable glands per enclosure side			
A	B	C/D	A/B/C/D
M 16	PG 7	18	8
	PG 9	10	5
	PG 11	8	3
M 20	PG 13,5	6	3
	PG 16	4	2
M 25	PG 21	3	2
M 32	PG 29	2	1
M 40	PG 36		
M 50	PG 42		
M 63	PG 48		

* Please note: Mould slope for casting ejection, dimensions in the amount of the bottom!

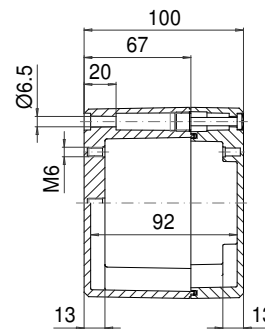
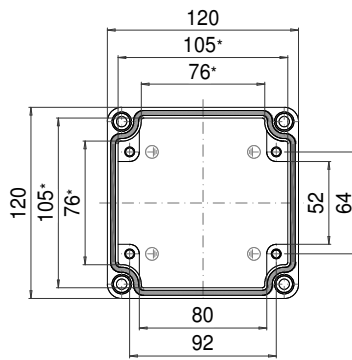
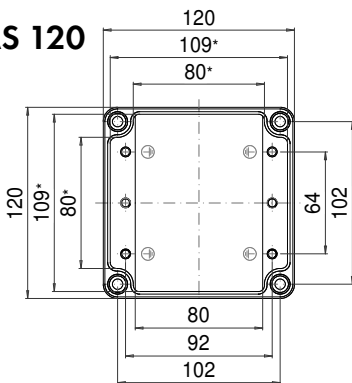
AS 104



Maximum number of cable glands per enclosure side			
A	B	C/D	A/B/C/D
M 16	PG 7	26	8
	PG 9	18	5
	PG 11	12	3
M 20	PG 13,5	9	3
	PG 16	6	2
M 25	PG 21	4	2
M 32	PG 29	3	
M 40	PG 36		
M 50	PG 42		
M 63	PG 48		

* Please note: Mould slope for casting ejection, dimensions in the amount of the bottom!

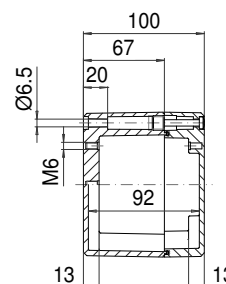
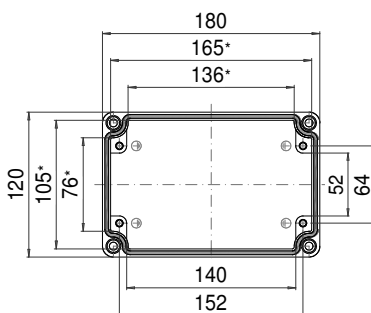
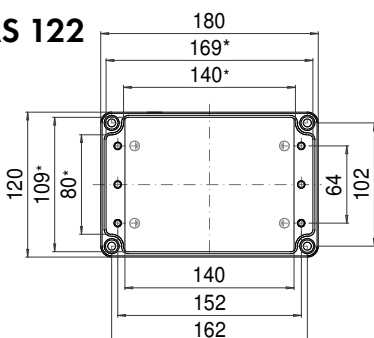
AS 120



Maximum number of cable glands per enclosure side			
A	B	C/D	A/B/C/D
M 16	PG 7	14	12
	PG 9	11	8
	PG 11	6	6
M 20	PG 13,5	6	6
	PG 16	4	3
M 25	PG 21	3	2
M 32	PG 29	1	1
M 40	PG 36	1	1
M 50	PG 42		
M 63	PG 48		

* Please note: Mould slope for casting ejection, dimensions in the amount of the bottom!

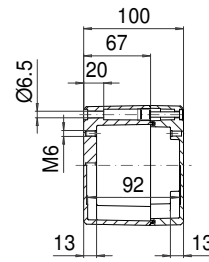
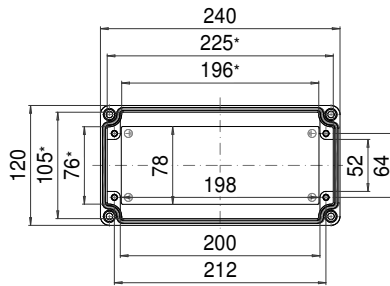
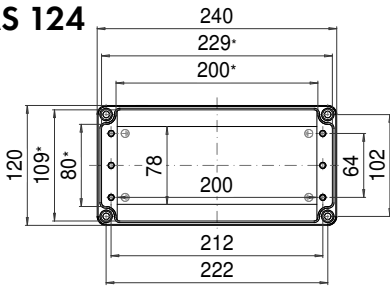
AS 122



Maximum number of cable glands per enclosure side			
A	B	C/D	A/B/C/D
M 16	PG 7	26	12
	PG 9	18	8
	PG 11	11	6
M 20	PG 13,5	10	6
	PG 16	8	3
M 25	PG 21	5	2
M 32	PG 29	3	1
M 40	PG 36	2	1
M 50	PG 42		
M 63	PG 48		

* Please note: Mould slope for casting ejection, dimensions in the amount of the bottom!

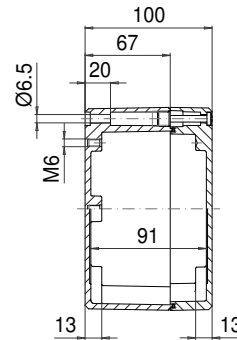
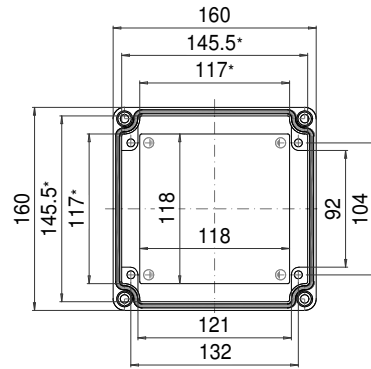
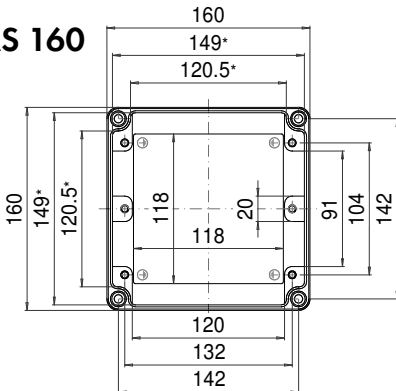
AS 124



Maximum number of cable glands per enclosure side						
A	B	C	D	A/B/C/D		
				PG 7	40	12
M 16				PG 9	26	8
				PG 11	17	6
M 20				PG 13,5	14	6
				PG 16	12	3
M 25				PG 21	7	2
M 32				PG 29	4	1
M 40				PG 36	3	1
M 50				PG 42		
M 63				PG 48		

* Please note: Mould slope for casting ejection, dimensions in the amount of the bottom!

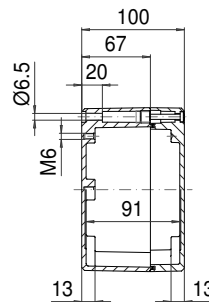
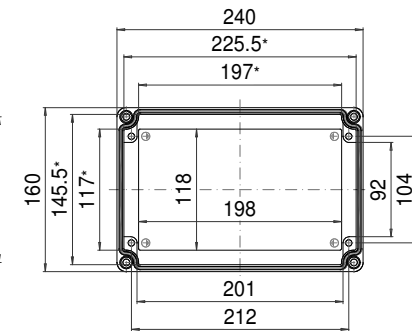
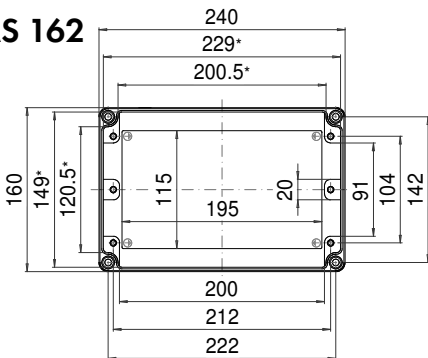
AS 160



Maximum number of cable glands per enclosure side						
A	B	C	D	A/B/C/D		
				PG 7	22	18
M 16				PG 9	15	12
				PG 11	9	8
M 20				PG 13,5	8	8
				PG 16	6	4
M 25				PG 21	4	3
M 32				PG 29	2	2
M 40				PG 36	2	2
M 50				PG 42		
M 63				PG 48		

* Please note: Mould slope for casting ejection, dimensions in the amount of the bottom!

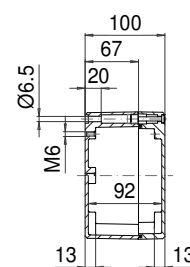
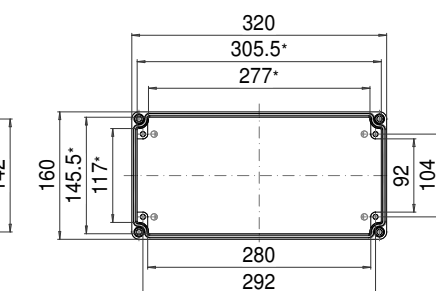
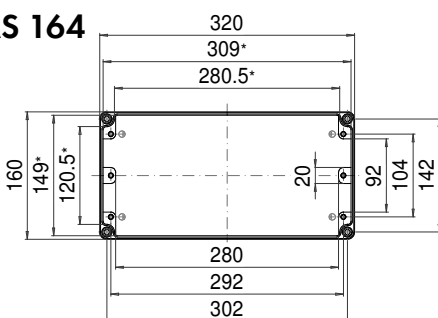
AS 162



Maximum number of cable glands per enclosure side						
A	B	C	D	A/B/C/D		
				PG 7	40	18
M 16				PG 9	26	12
				PG 11	17	8
M 20				PG 13,5	14	8
				PG 16	12	4
M 25				PG 21	7	3
M 32				PG 29	4	2
M 40				PG 36	3	2
M 50				PG 42		
M 63				PG 48		

* Please note: Mould slope for casting ejection, dimensions in the amount of the bottom!

AS 164



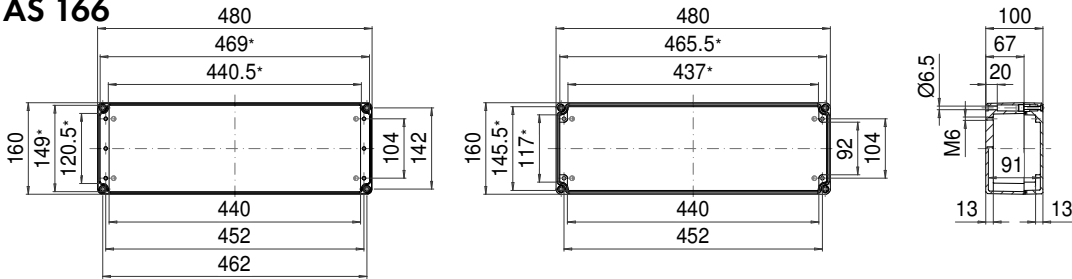
Maximum number of cable glands per enclosure side						
A	B	C	D	A/B/C/D		
				PG 7	56	18
M 16				PG 9	36	12
				PG 11	23	8
M 20				PG 13,5	18	8
				PG 16	16	4
M 25				PG 21	10	3
M 32				PG 29	6	2
M 40				PG 36	4	2
M 50				PG 42		
M 63				PG 48		

* Please note: Mould slope for casting ejection, dimensions in the amount of the bottom!

ROLEC Attachment and mounting dimensions

aluNORM AS

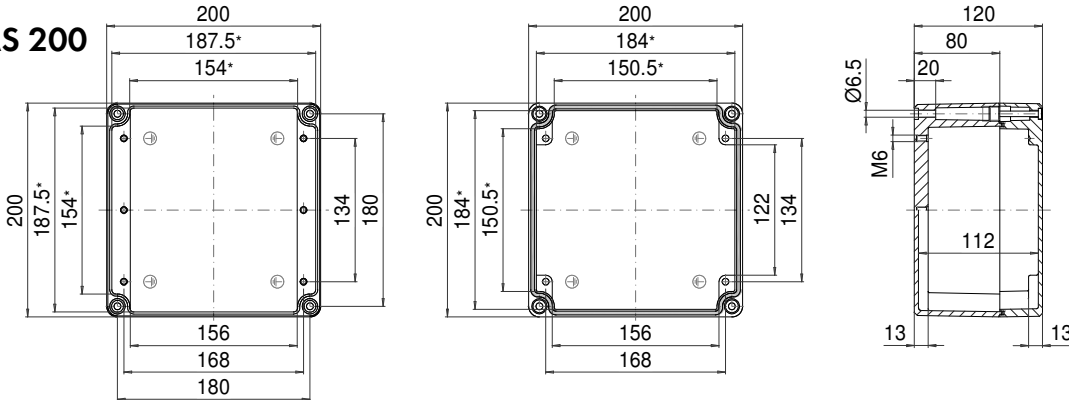
AS 166



* Please note: Mould slope for casting ejection, dimensions in the amount of the bottom!

Maximum number of cable glands per enclosure side			
A	B	C/D	A/B/C/D
	PG 7	86	18
M 16	PG 9	57	12
	PG 11	36	8
M 20	PG 13,5	30	8
	PG 16	26	4
M 25	PG 21	16	3
M 32	PG 29	10	2
M 40	PG 36	7	2
M 50	PG 42		
M 63	PG 48		

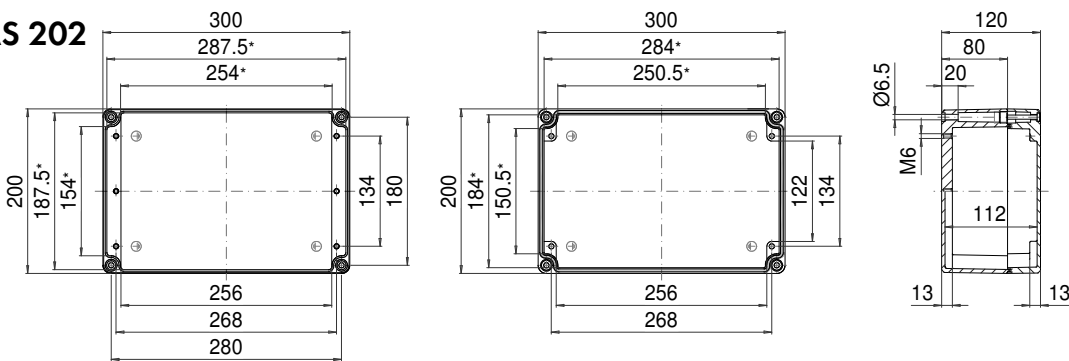
AS 200



* Please note: Mould slope for casting ejection, dimensions in the amount of the bottom!

Maximum number of cable glands per enclosure side			
A	B	C/D	A/B/C/D
	PG 7	30	30
M 16	PG 9	21	21
	PG 11	18	12
M 20	PG 13,5	14	11
	PG 16	9	9
M 25	PG 21	8	5
M 32	PG 29	4	3
M 40	PG 36	2	2
M 50	PG 42		
M 63	PG 48		

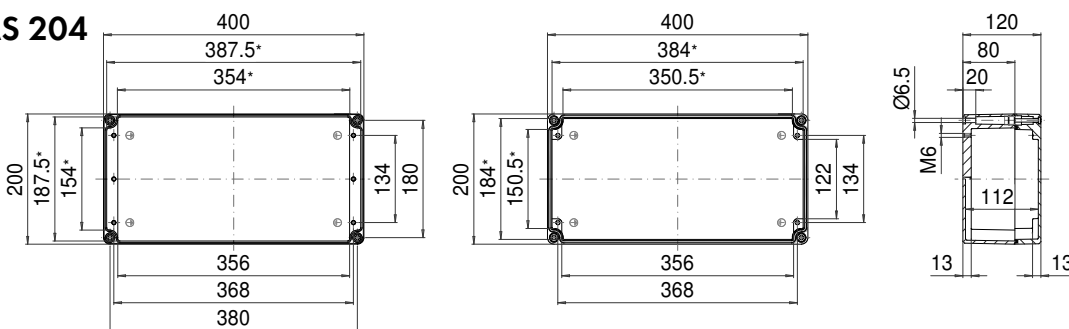
AS 202



* Please note: Mould slope for casting ejection, dimensions in the amount of the bottom!

Maximum number of cable glands per enclosure side			
A	B	C/D	A/B/C/D
	PG 7	50	30
M 16	PG 9	33	21
	PG 11	27	12
M 20	PG 13,5	21	11
	PG 16	15	9
M 25	PG 21	13	5
M 32	PG 29	6	3
M 40	PG 36	4	2
M 50	PG 42		
M 63	PG 48		

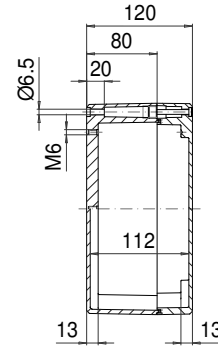
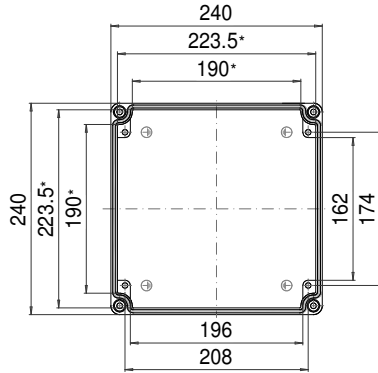
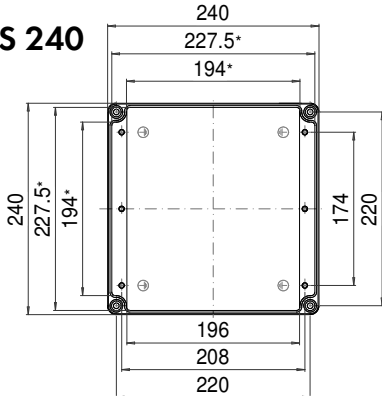
AS 204



* Please note: Mould slope for casting ejection, dimensions in the amount of the bottom!

Maximum number of cable glands per enclosure side			
A	B	C/D	A/B/C/D
	PG 7	70	30
M 16	PG 9	48	21
	PG 11	39	12
M 20	PG 13,5	30	11
	PG 16	20	9
M 25	PG 21	18	5
M 32	PG 29	9	3
M 40	PG 36	5	2
M 50	PG 42		
M 63	PG 48		

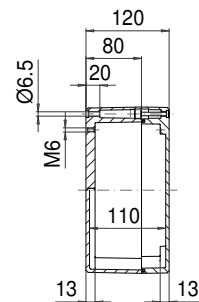
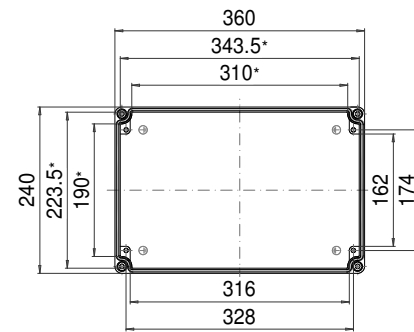
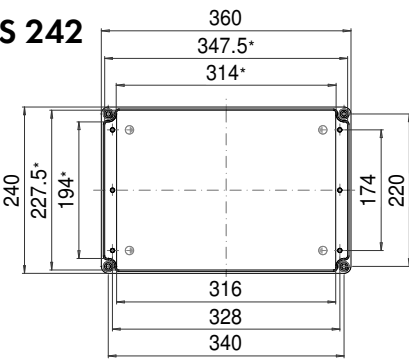
AS 240



Maximum number of cable glands per enclosure side			
A	B	C	D
PG 7	38	38	
M 16	PG 9	24	24
	PG 11	21	17
M 20	PG 13,5	17	14
	PG 16	12	12
M 25	PG 21	10	7
M 32	PG 29	5	4
M 40	PG 36	3	3
M 50	PG 42		
M 63	PG 48		

* Please note: Mould slope for casting ejection, dimensions in the amount of the bottom!

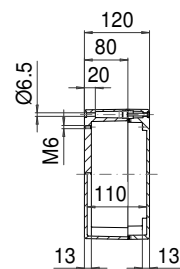
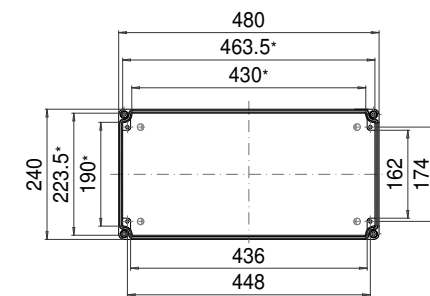
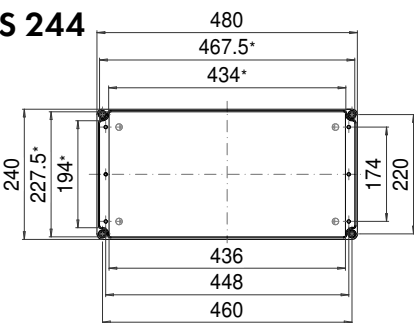
AS 242



Maximum number of cable glands per enclosure side			
A	B	C	D
PG 7	62	38	
M 16	PG 9	45	24
	PG 11	35	17
M 20	PG 13,5	27	14
	PG 16	18	12
M 25	PG 21	16	7
M 32	PG 29	8	4
M 40	PG 36	5	3
M 50	PG 42		
M 63	PG 48		

* Please note: Mould slope for casting ejection, dimensions in the amount of the bottom!

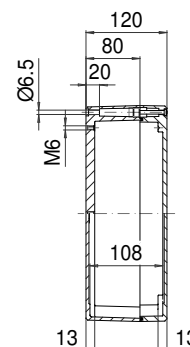
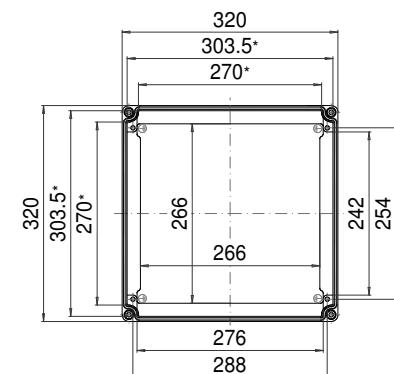
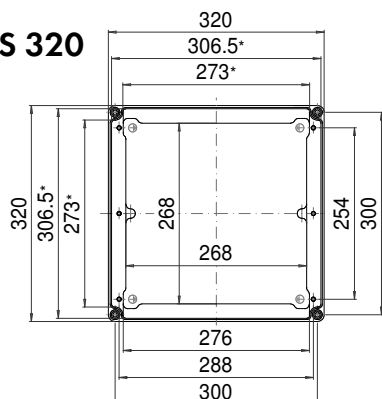
AS 244



Maximum number of cable glands per enclosure side			
A	B	C	D
PG 7	86	38	
M 16	PG 9	60	24
	PG 11	48	17
M 20	PG 13,5	38	14
	PG 16	26	12
M 25	PG 21	22	7
M 32	PG 29	11	4
M 40	PG 36	7	3
M 50	PG 42		
M 63	PG 48		

* Please note: Mould slope for casting ejection, dimensions in the amount of the bottom!

AS 320



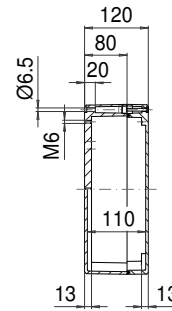
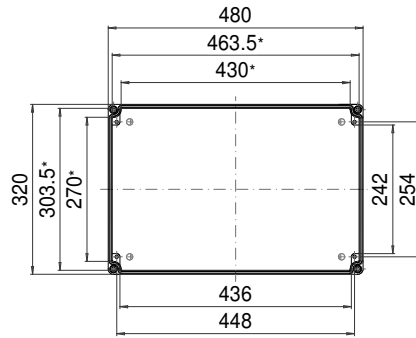
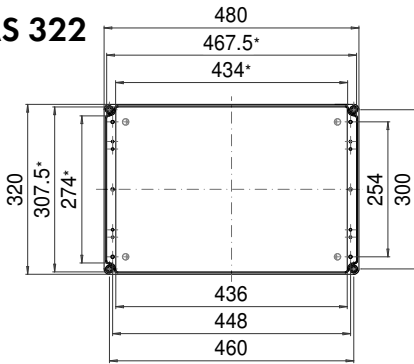
Maximum number of cable glands per enclosure side			
A	B	C	D
PG 7	54	54	
M 16	PG 9	36	36
	PG 11	30	23
M 20	PG 13,5	24	18
	PG 16	16	16
M 25	PG 21	14	10
M 32	PG 29	7	6
M 40	PG 36	4	4
M 50	PG 42		
M 63	PG 48		

* Please note: Mould slope for casting ejection, dimensions in the amount of the bottom!

ROLEC Attachment and mounting dimensions

aluNORM AS/AF

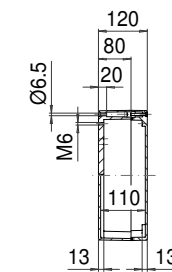
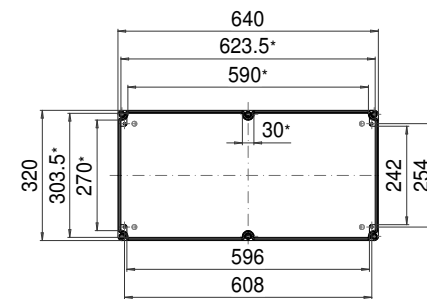
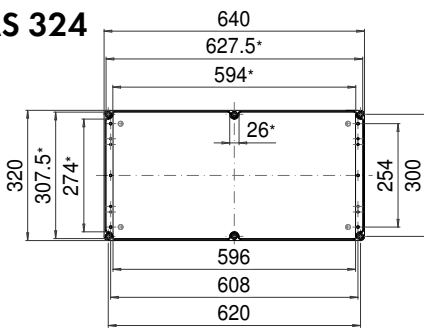
AS 322



Maximum number of cable glands per enclosure side			
A	B	C/D	A/B/C/D
PG 7	86	54	
M 16	PG 9	57	36
	PG 11	48	23
M 20	PG 13,5	38	18
	PG 16	26	16
M 25	PG 21	22	10
M 32	PG 29	11	6
M 40	PG 36	7	4
M 50	PG 42		
M 63	PG 48		

* Please note: Mould slope for casting ejection, dimensions in the amount of the bottom!

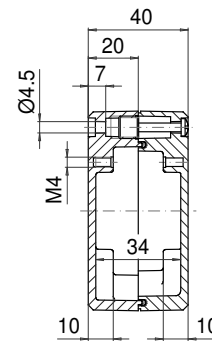
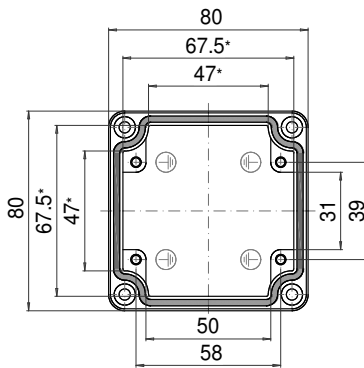
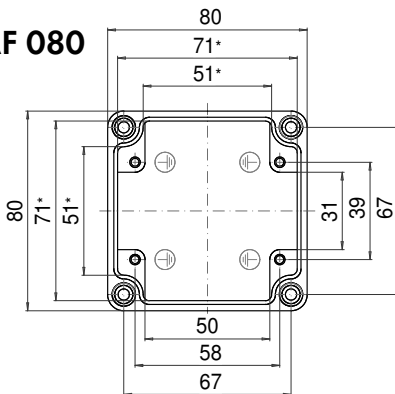
AS 324



Maximum number of cable glands per enclosure side			
A	B	C/D	A/B/C/D
PG 7	112	54	
M 16	PG 9	72	36
	PG 11	60	23
M 20	PG 13,5	48	18
	PG 16	32	16
M 25	PG 21	28	10
M 32	PG 29	14	6
M 40	PG 36	8	4
M 50	PG 42		
M 63	PG 48		

* Please note: Mould slope for casting ejection, dimensions in the amount of the bottom!

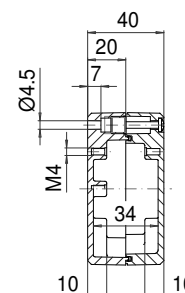
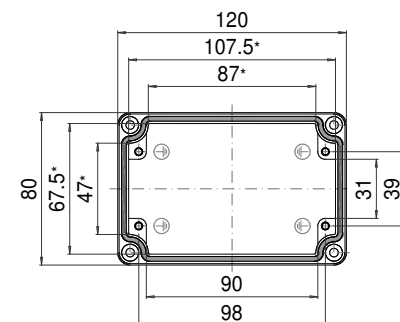
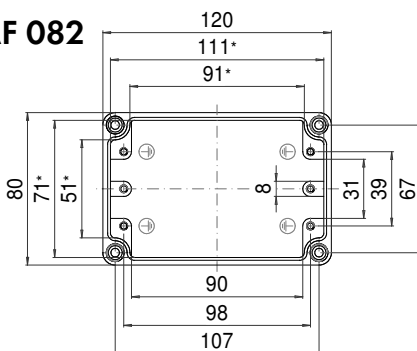
AF 080



Maximum number of cable glands per enclosure side			
A	B	C/D	A/B/C/D
PG 7	2	2	
M 16	PG 9		
	PG 11		
M 20	PG 13,5		
	PG 16		
M 25	PG 21		
M 32	PG 29		
M 40	PG 36		
M 50	PG 42		
M 63	PG 48		

* Please note: Mould slope for casting ejection, dimensions in the amount of the bottom!

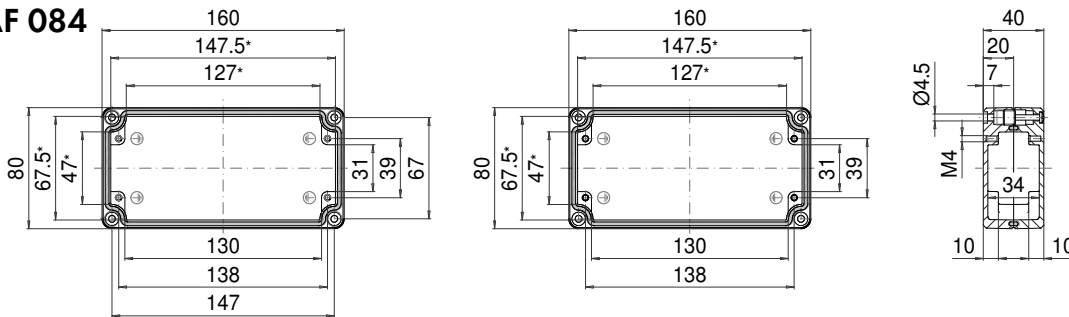
AF 082



Maximum number of cable glands per enclosure side			
A	B	C/D	A/B/C/D
PG 7	5	2	
M 16	PG 9		
	PG 11		
M 20	PG 13,5		
	PG 16		
M 25	PG 21		
M 32	PG 29		
M 40	PG 36		
M 50	PG 42		
M 63	PG 48		

* Please note: Mould slope for casting ejection, dimensions in the amount of the bottom!

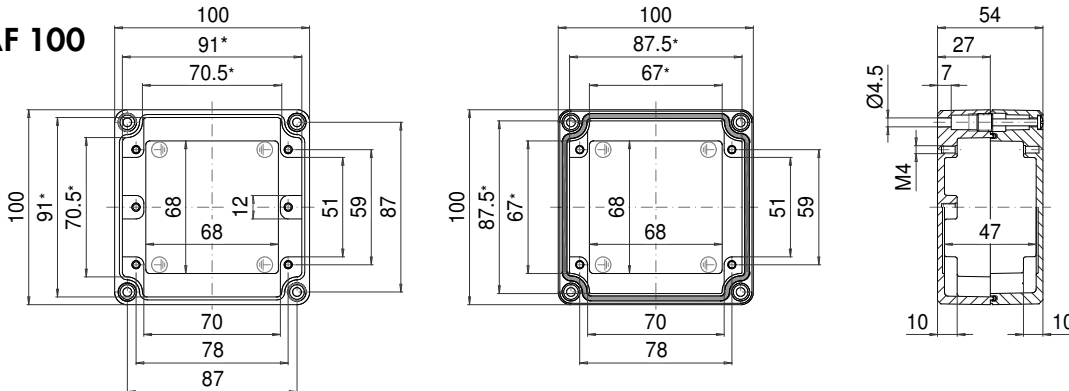
AF 084



* Please note: Mould slope for casting ejection, dimensions in the amount of the bottom!

Maximum number of cable glands per enclosure side			
A	B	A/B C/D	
C	D	PG 7	7 2
M 16	PG 9	PG 11	
M 20	PG 13,5	PG 16	
M 25	PG 21		
M 32	PG 29		
M 40	PG 36		
M 50	PG 42		
M 63	PG 48		

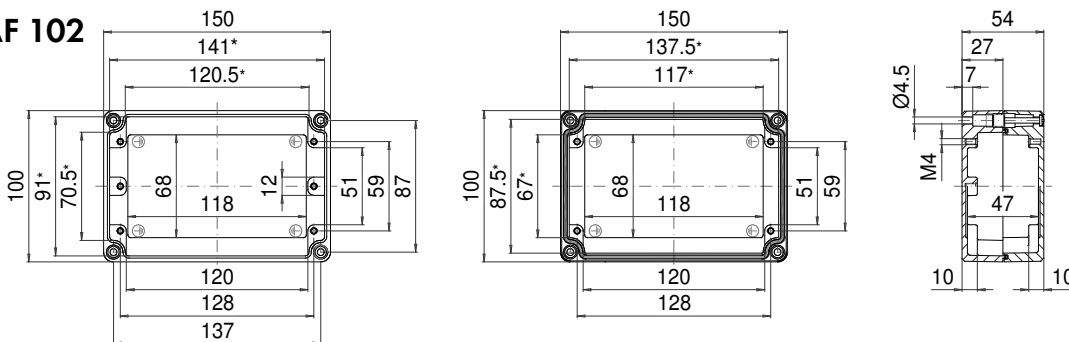
AF 100



* Please note: Mould slope for casting ejection, dimensions in the amount of the bottom!

Maximum number of cable glands per enclosure side			
A	B	A/B C/D	
C	D	PG 7	3 3
M 16	PG 9	PG 11	3 2
M 20	PG 13,5	PG 16	
M 25	PG 21		
M 32	PG 29		
M 40	PG 36		
M 50	PG 42		
M 63	PG 48		

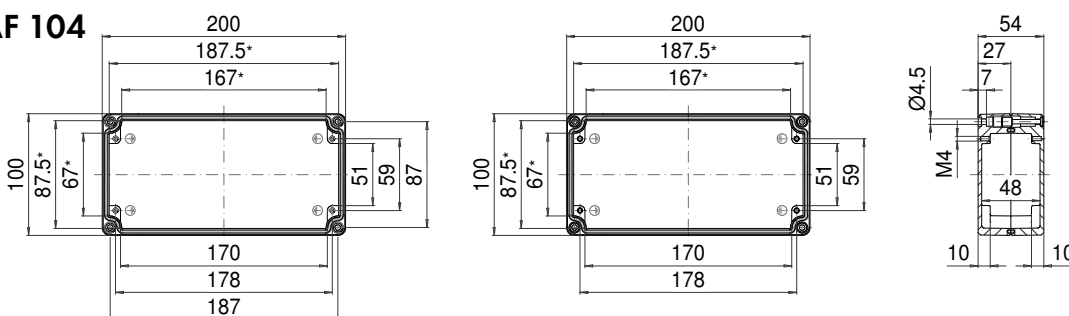
AF 102



* Please note: Mould slope for casting ejection, dimensions in the amount of the bottom!

Maximum number of cable glands per enclosure side			
A	B	A/B C/D	
C	D	PG 7	6 3
M 16	PG 9	PG 11	5 2
M 20	PG 13,5	PG 16	
M 25	PG 21		
M 32	PG 29		
M 40	PG 36		
M 50	PG 42		
M 63	PG 48		

AF 104



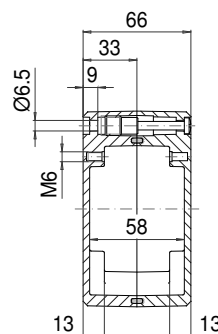
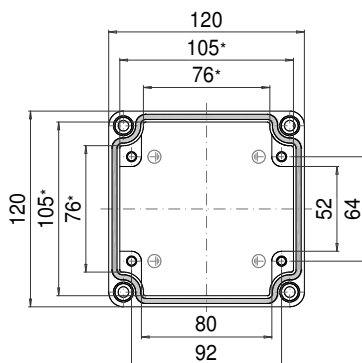
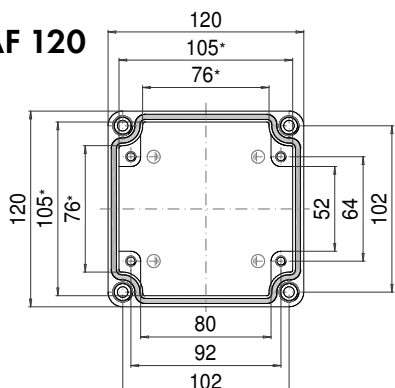
* Please note: Mould slope for casting ejection, dimensions in the amount of the bottom!

Maximum number of cable glands per enclosure side			
A	B	A/B C/D	
C	D	PG 7	9 3
M 16	PG 9	PG 11	7 2
M 20	PG 13,5	PG 16	
M 25	PG 21		
M 32	PG 29		
M 40	PG 36		
M 50	PG 42		
M 63	PG 48		

ROLEC Attachment and mounting dimensions

aluNORM AF

AF 120

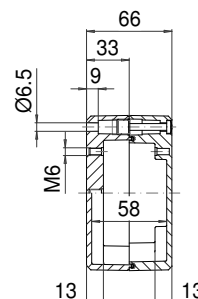
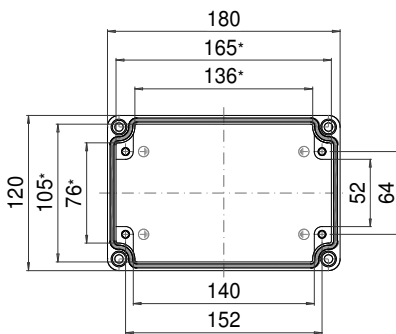
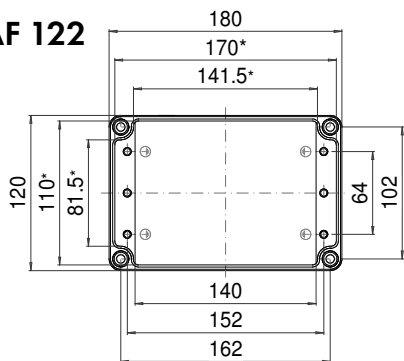


Maximum number of cable glands per enclosure side

C	A	D	A/B C/D	
			A/B	C/D
B	PG 7		4	3
M 16	PG 9		3	3
	PG 11		3	2
M 20	PG 13,5		2	2
	PG 16		2	1
M 25	PG 21			
M 32	PG 29			
M 40	PG 36			
M 50	PG 42			
M 63	PG 48			

* Please note: Mould slope for casting ejection, dimensions in the amount of the bottom!

AF 122

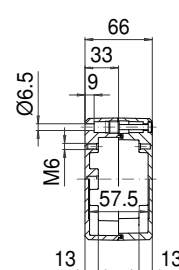
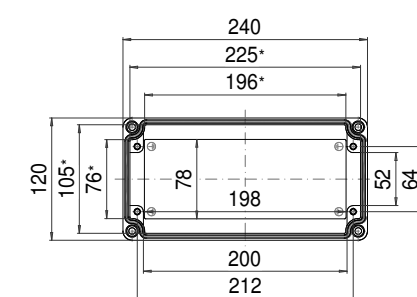
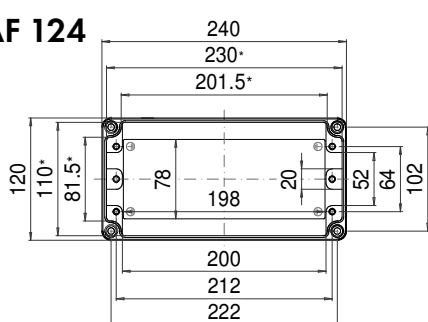


Maximum number of cable glands per enclosure side

C	A	D	A/B C/D	
			A/B	C/D
B	PG 7		8	3
M 16	PG 9		6	3
	PG 11		5	2
M 20	PG 13,5		5	2
	PG 16		4	1
M 25	PG 21			
M 32	PG 29			
M 40	PG 36			
M 50	PG 42			
M 63	PG 48			

* Please note: Mould slope for casting ejection, dimensions in the amount of the bottom!

AF 124

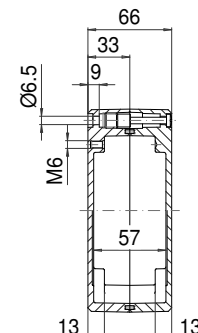
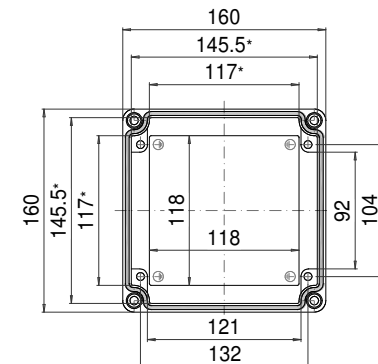
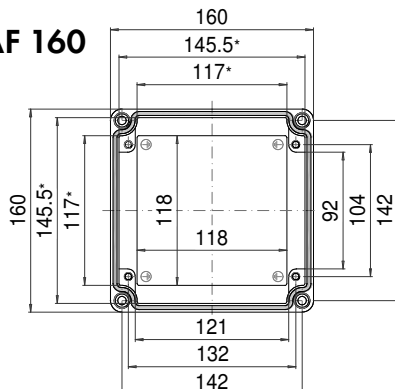


Maximum number of cable glands per enclosure side

C	A	D	A/B C/D	
			A/B	C/D
B	PG 7		12	3
M 16	PG 9		9	3
	PG 11		7	2
M 20	PG 13,5		7	2
	PG 16		6	1
M 25	PG 21			
M 32	PG 29			
M 40	PG 36			
M 50	PG 42			
M 63	PG 48			

* Please note: Mould slope for casting ejection, dimensions in the amount of the bottom!

AF 160

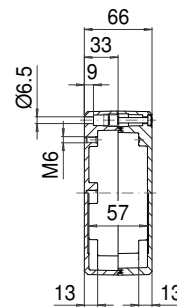
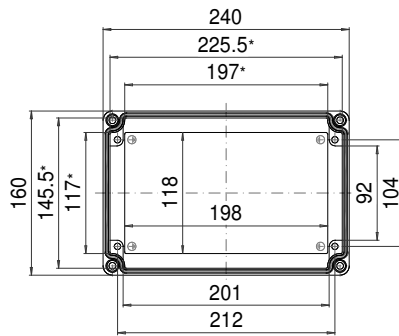
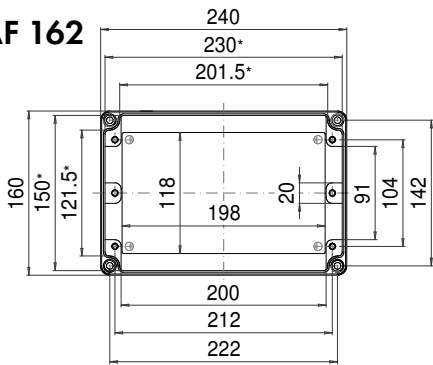


Maximum number of cable glands per enclosure side

C	A	D	A/B C/D	
			A/B	C/D
B	PG 7		7	5
M 16	PG 9		5	4
	PG 11		4	3
M 20	PG 13,5		4	3
	PG 16		3	2
M 25	PG 21			
M 32	PG 29			
M 40	PG 36			
M 50	PG 42			
M 63	PG 48			

* Please note: Mould slope for casting ejection, dimensions in the amount of the bottom!

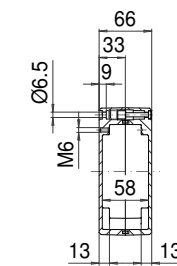
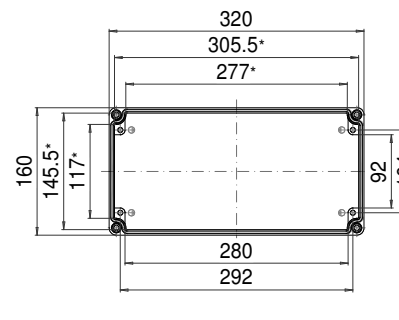
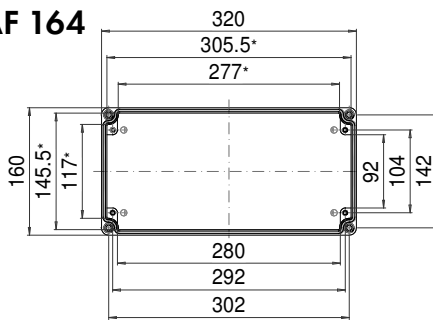
AF 162



Maximum number of cable glands per enclosure side				
A	B	C	D	A/B/C/D
				PG 7
M 16				PG 9
				PG 11
M 20				PG 13,5
				PG 16
M 25				PG 21
M 32				PG 29
M 40				PG 36
M 50				PG 42
M 63				PG 48

* Please note: Mould slope for casting ejection, dimensions in the amount of the bottom!

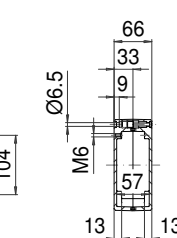
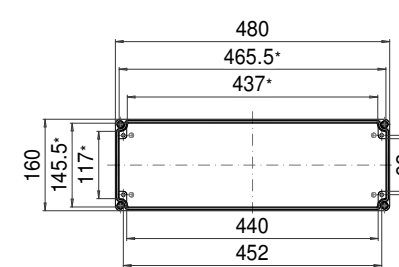
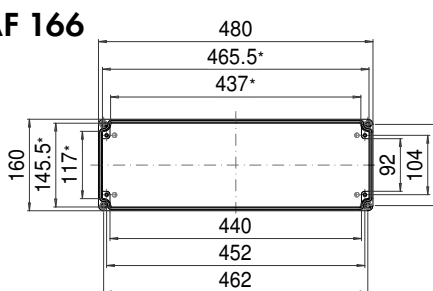
AF 164



Maximum number of cable glands per enclosure side				
A	B	C	D	A/B/C/D
				PG 7
M 16				PG 9
				PG 11
M 20				PG 13,5
				PG 16
M 25				PG 21
M 32				PG 29
M 40				PG 36
M 50				PG 42
M 63				PG 48

* Please note: Mould slope for casting ejection, dimensions in the amount of the bottom!

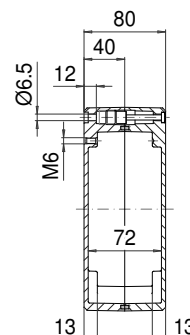
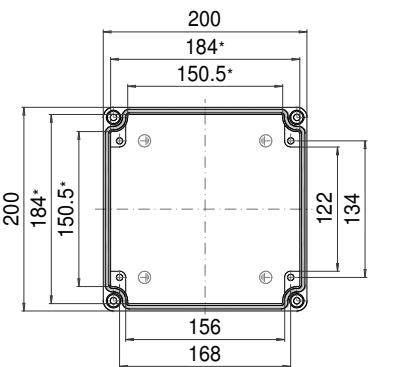
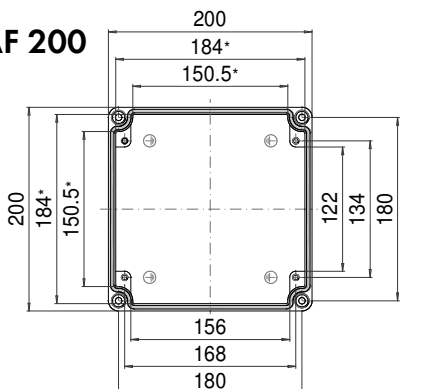
AF 166



Maximum number of cable glands per enclosure side				
A	B	C	D	A/B/C/D
				PG 7
M 16				PG 9
				PG 11
M 20				PG 13,5
				PG 16
M 25				PG 21
M 32				PG 29
M 40				PG 36
M 50				PG 42
M 63				PG 48

* Please note: Mould slope for casting ejection, dimensions in the amount of the bottom!

AF 200



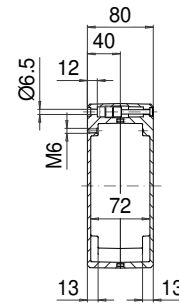
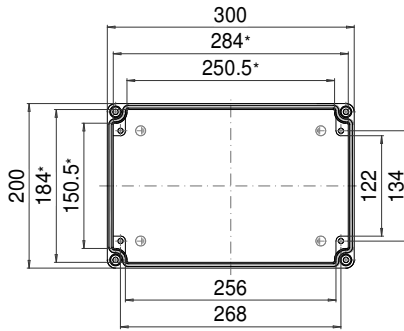
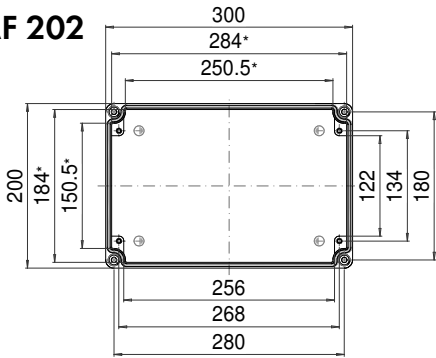
Maximum number of cable glands per enclosure side				
A	B	C	D	A/B/C/D
				PG 7
M 16				PG 9
				PG 11
M 20				PG 13,5
				PG 16
M 25				PG 21
M 32				PG 29
M 40				PG 36
M 50				PG 42
M 63				PG 48

* Please note: Mould slope for casting ejection, dimensions in the amount of the bottom!

ROLEC Attachment and mounting dimensions

aluNORM AF

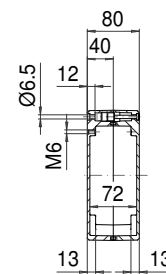
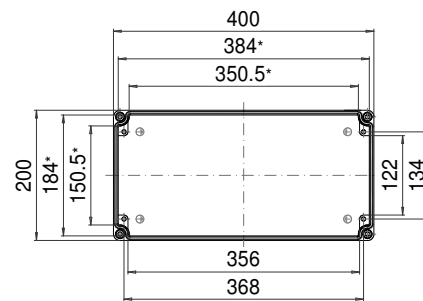
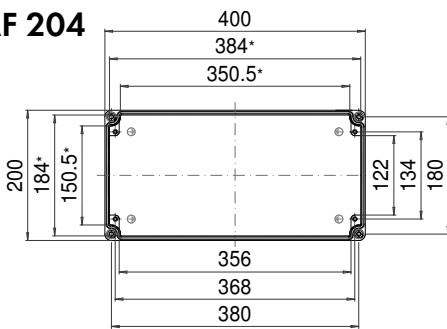
AF 202



Maximum number of cable glands per enclosure side			
A	B	C/D	A/B/C/D
PG 7	20	11	
M 16	PG 9	12	7
	PG 11	9	5
M 20	PG 13,5	9	5
	PG 16	7	4
M 25	PG 21	6	3
M 32	PG 29		
M 40	PG 36		
M 50	PG 42		
M 63	PG 48		

* Please note: Mould slope for casting ejection, dimensions in the amount of the bottom!

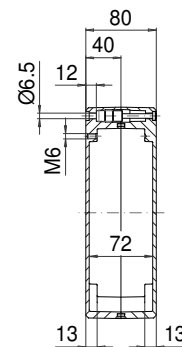
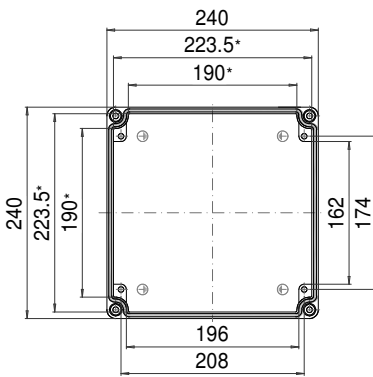
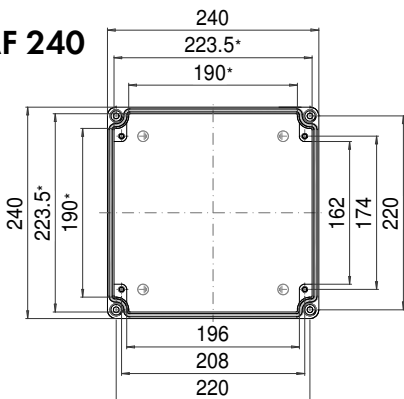
AF 204



Maximum number of cable glands per enclosure side			
A	B	C/D	A/B/C/D
PG 7	28	11	
M 16	PG 9	17	7
	PG 11	13	5
M 20	PG 13,5	12	5
	PG 16	10	4
M 25	PG 21	9	3
M 32	PG 29		
M 40	PG 36		
M 50	PG 42		
M 63	PG 48		

* Please note: Mould slope for casting ejection, dimensions in the amount of the bottom!

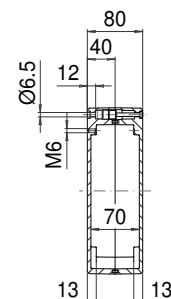
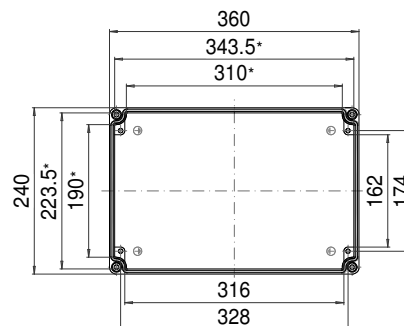
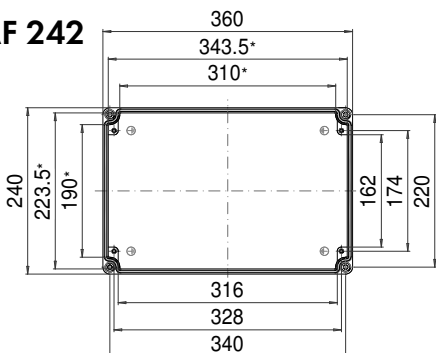
AF 240



Maximum number of cable glands per enclosure side			
A	B	C/D	A/B/C/D
PG 7	15	15	
M 16	PG 9	9	9
	PG 11	7	7
M 20	PG 13,5	6	6
	PG 16	5	5
M 25	PG 21	5	4
M 32	PG 29		
M 40	PG 36		
M 50	PG 42		
M 63	PG 48		

* Please note: Mould slope for casting ejection, dimensions in the amount of the bottom!

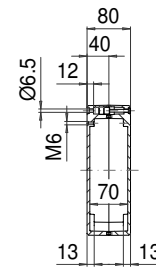
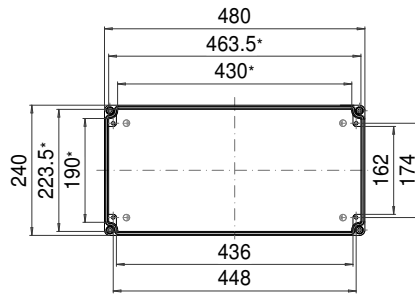
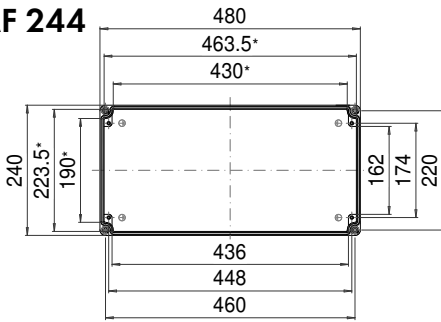
AF 242



Maximum number of cable glands per enclosure side			
A	B	C/D	A/B/C/D
PG 7	25	15	
M 16	PG 9	15	9
	PG 11	11	7
M 20	PG 13,5	11	6
	PG 16	9	5
M 25	PG 21	8	4
M 32	PG 29		
M 40	PG 36		
M 50	PG 42		
M 63	PG 48		

* Please note: Mould slope for casting ejection, dimensions in the amount of the bottom!

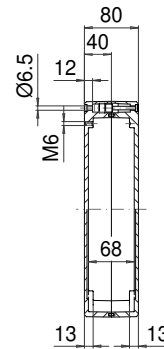
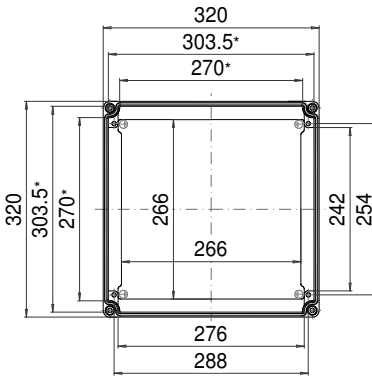
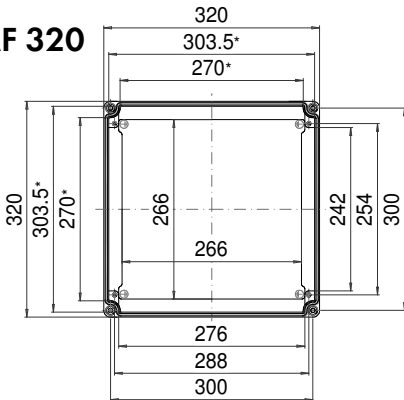
AF 244



Maximum number of cable glands per enclosure side			
A	B	C	D
PG 7	34	15	
M 16	PG 9	20	9
	PG 11	16	7
M 20	PG 13,5	15	6
	PG 16	12	5
M 25	PG 21	11	4
M 32	PG 29		
M 40	PG 36		
M 50	PG 42		
M 63	PG 48		

* Please note: Mould slope for casting ejection, dimensions in the amount of the bottom!

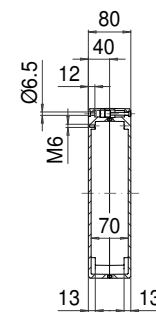
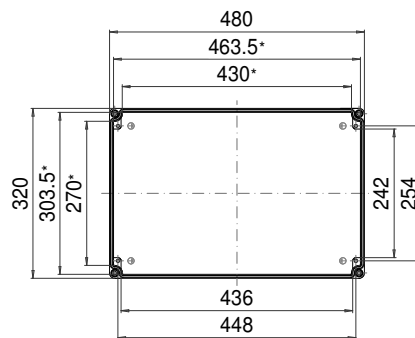
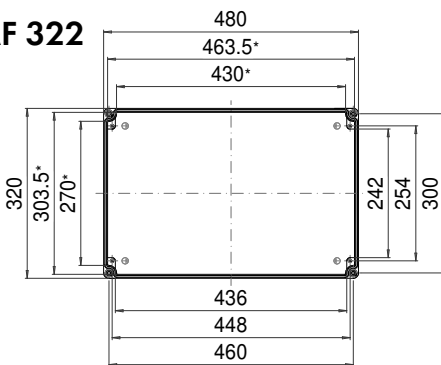
AF 320



Maximum number of cable glands per enclosure side			
A	B	C	D
PG 7	21	21	
M 16	PG 9	13	13
	PG 11	10	10
M 20	PG 13,5	10	9
	PG 16	8	7
M 25	PG 21	7	6
M 32	PG 29		
M 40	PG 36		
M 50	PG 42		
M 63	PG 48		

* Please note: Mould slope for casting ejection, dimensions in the amount of the bottom!

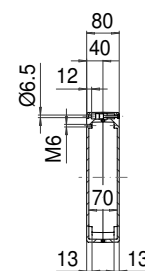
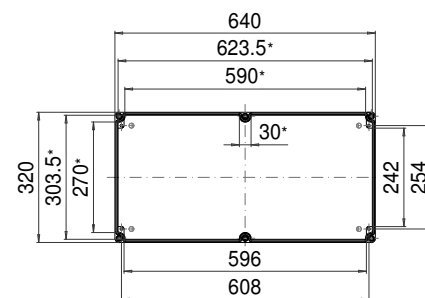
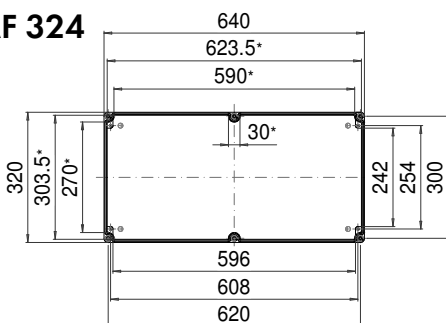
AF 322



Maximum number of cable glands per enclosure side			
A	B	C	D
PG 7	34	21	
M 16	PG 9	21	13
	PG 11	16	10
M 20	PG 13,5	15	9
	PG 16	12	7
M 25	PG 21	11	6
M 32	PG 29		
M 40	PG 36		
M 50	PG 42		
M 63	PG 48		

* Please note: Mould slope for casting ejection, dimensions in the amount of the bottom!

AF 324



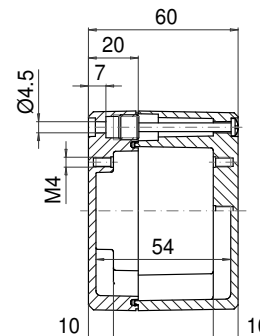
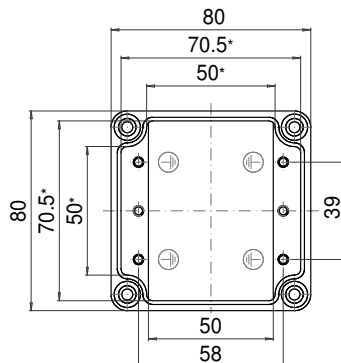
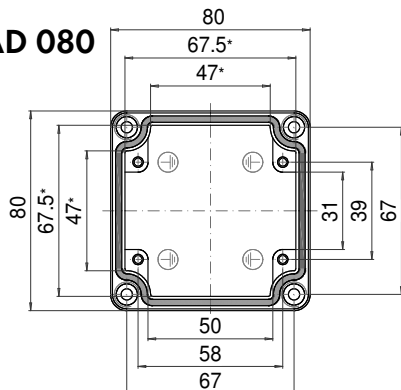
Maximum number of cable glands per enclosure side			
A	B	C	D
PG 7	44	21	
M 16	PG 9	28	13
	PG 11	20	10
M 20	PG 13,5	20	9
	PG 16	16	7
M 25	PG 21	14	6
M 32	PG 29		
M 40	PG 36		
M 50	PG 42		
M 63	PG 48		

* Please note: Mould slope for casting ejection, dimensions in the amount of the bottom!

ROLEC Attachment and mounting dimensions

aluNORM AD

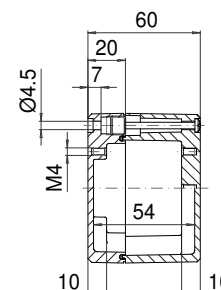
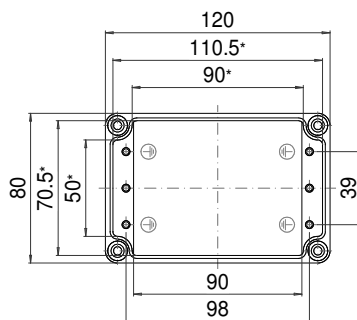
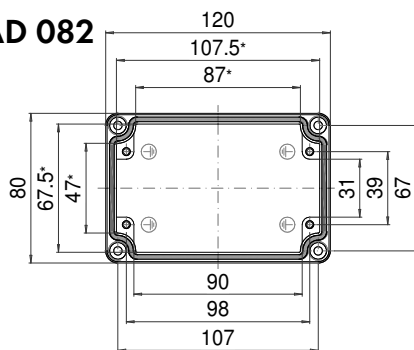
AD 080



Maximum number of cable glands per enclosure side				
A		A/B		C/D
C	D			
M 16	PG 7	2	2	
	PG 9			
	PG 11			
M 20	PG 13,5			
	PG 16			
M 25	PG 21			
M 32	PG 29			
M 40	PG 36			
M 50	PG 42			
M 63	PG 48			

* Please note: Mould slope for casting ejection, dimensions in the amount of the bottom!

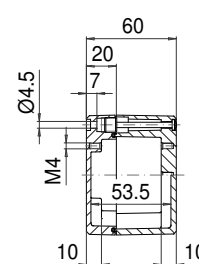
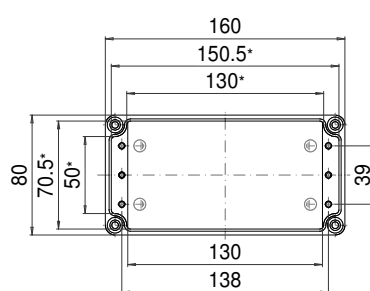
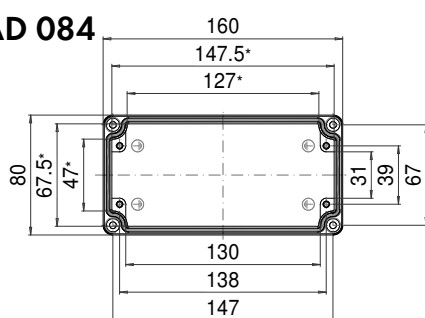
AD 082



Maximum number of cable glands per enclosure side				
A		A/B		C/D
C	D			
M 16	PG 7	5	2	
	PG 9			
	PG 11			
M 20	PG 13,5			
	PG 16			
M 25	PG 21			
M 32	PG 29			
M 40	PG 36			
M 50	PG 42			
M 63	PG 48			

* Please note: Mould slope for casting ejection, dimensions in the amount of the bottom!

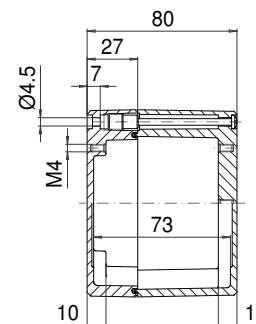
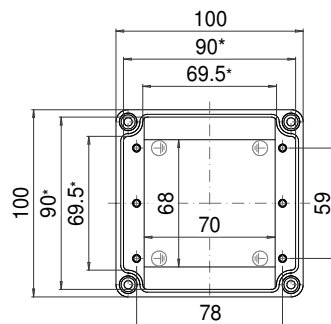
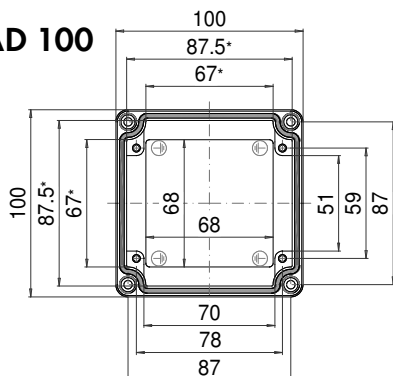
AD 084



Maximum number of cable glands per enclosure side				
A		A/B		C/D
C	D			
M 16	PG 7	7	2	
	PG 9			
	PG 11			
M 20	PG 13,5			
	PG 16			
M 25	PG 21			
M 32	PG 29			
M 40	PG 36			
M 50	PG 42			
M 63	PG 48			

* Please note: Mould slope for casting ejection, dimensions in the amount of the bottom!

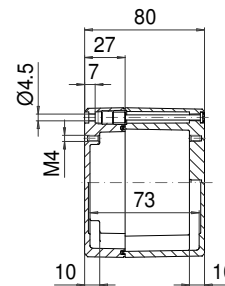
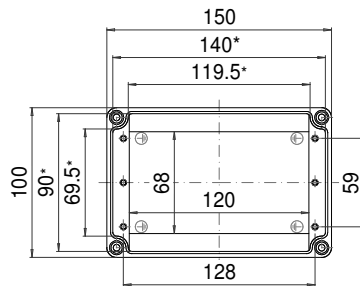
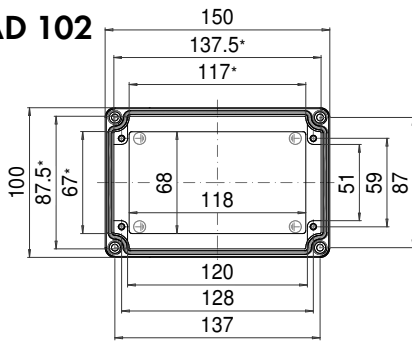
AD 100



Maximum number of cable glands per enclosure side				
A		A/B		C/D
C	D			
M 16	PG 7	3	3	
	PG 9	3	2	
	PG 11			
M 20	PG 13,5			
	PG 16			
M 25	PG 21			
M 32	PG 29			
M 40	PG 36			
M 50	PG 42			
M 63	PG 48			

* Please note: Mould slope for casting ejection, dimensions in the amount of the bottom!

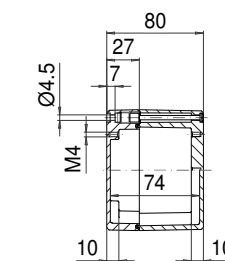
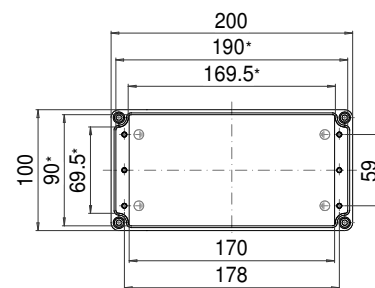
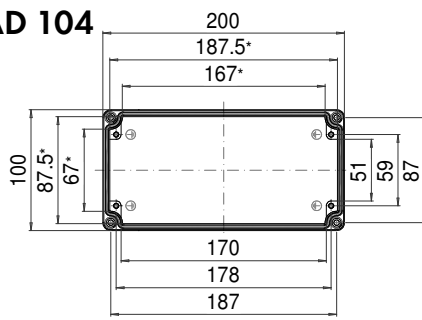
AD 102



Maximum number of cable glands per enclosure side			
A	B	C	D
PG 7	6	3	
M 16	PG 9	5	2
	PG 11		
M 20	PG 13,5		
	PG 16		
M 25	PG 21		
M 32	PG 29		
M 40	PG 36		
M 50	PG 42		
M 63	PG 48		

* Please note: Mould slope for casting ejection, dimensions in the amount of the bottom!

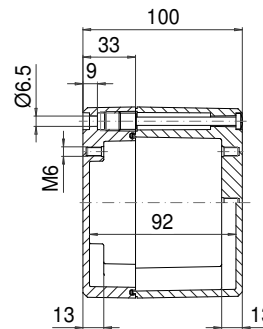
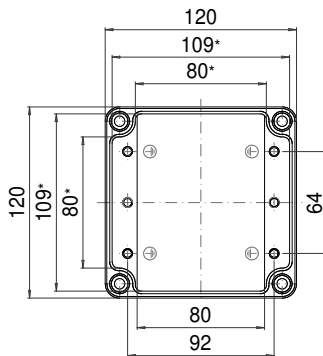
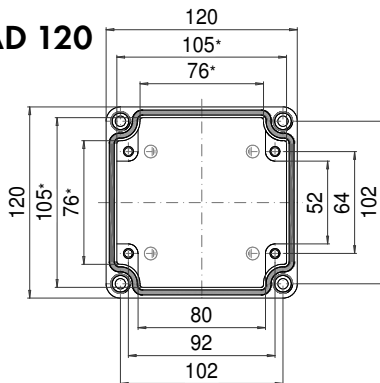
AD 104



Maximum number of cable glands per enclosure side			
A	B	C	D
PG 7	9	3	
M 16	PG 9	7	2
	PG 11		
M 20	PG 13,5		
	PG 16		
M 25	PG 21		
M 32	PG 29		
M 40	PG 36		
M 50	PG 42		
M 63	PG 48		

* Please note: Mould slope for casting ejection, dimensions in the amount of the bottom!

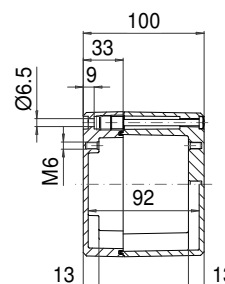
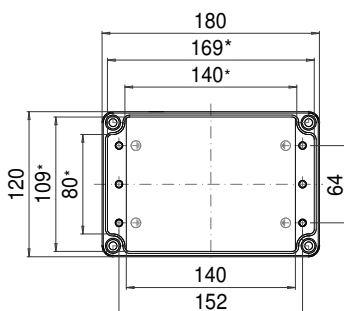
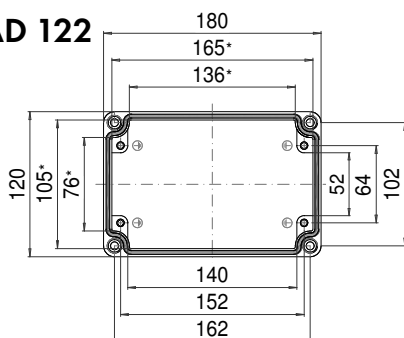
AD 120



Maximum number of cable glands per enclosure side			
A	B	C	D
PG 7	4	3	
M 16	PG 9	3	3
	PG 11	3	2
M 20	PG 13,5	2	2
	PG 16	2	1
M 25	PG 21		
M 32	PG 29		
M 40	PG 36		
M 50	PG 42		
M 63	PG 48		

* Please note: Mould slope for casting ejection, dimensions in the amount of the bottom!

AD 122



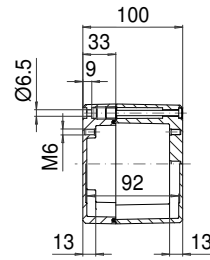
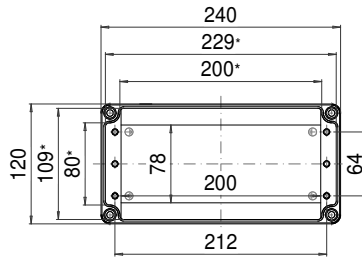
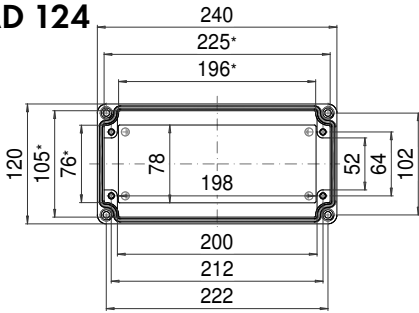
Maximum number of cable glands per enclosure side			
A	B	C	D
PG 7	8	3	
M 16	PG 9	6	3
	PG 11	5	2
M 20	PG 13,5	5	2
	PG 16	4	1
M 25	PG 21		
M 32	PG 29		
M 40	PG 36		
M 50	PG 42		
M 63	PG 48		

* Please note: Mould slope for casting ejection, dimensions in the amount of the bottom!

ROLEC Attachment and mounting dimensions

aluNORM AD

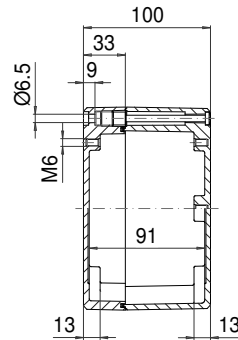
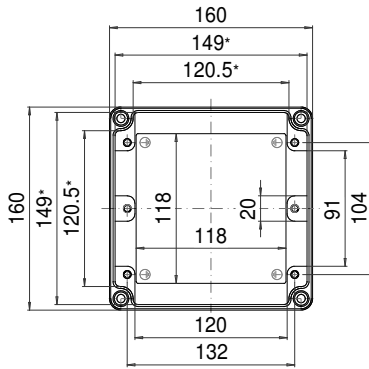
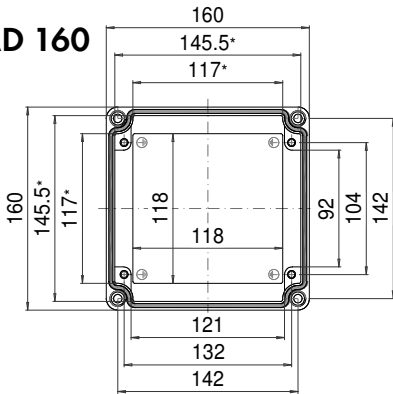
AD 124



Maximum number of cable glands per enclosure side			
A	B	C/D	A/B/C/D
PG 7	12	3	
M 16	PG 9	9	3
	PG 11	7	2
M 20	PG 13,5	7	2
	PG 16	6	1
M 25	PG 21		
M 32	PG 29		
M 40	PG 36		
M 50	PG 42		
M 63	PG 48		

* Please note: Mould slope for casting ejection, dimensions in the amount of the bottom!

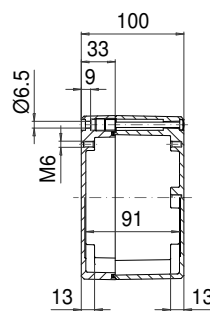
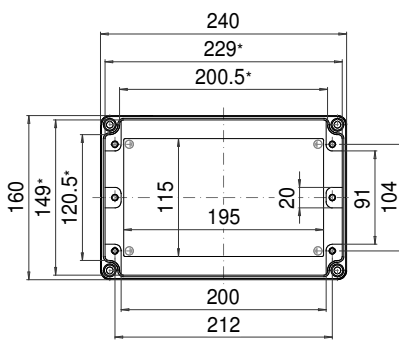
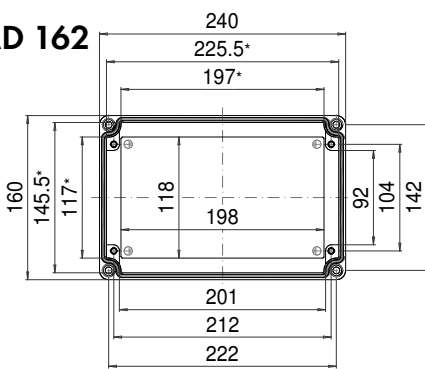
AD 160



Maximum number of cable glands per enclosure side			
A	B	C/D	A/B/C/D
PG 7	7	5	
M 16	PG 9	5	4
	PG 11	4	3
M 20	PG 13,5	4	3
	PG 16	3	2
M 25	PG 21		
M 32	PG 29		
M 40	PG 36		
M 50	PG 42		
M 63	PG 48		

* Please note: Mould slope for casting ejection, dimensions in the amount of the bottom!

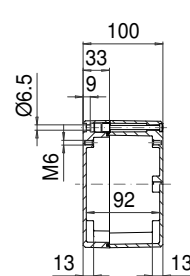
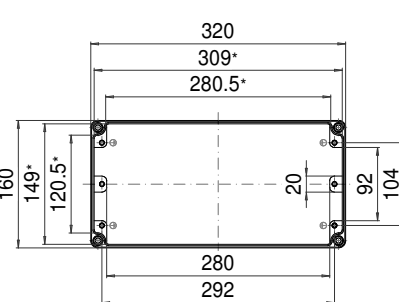
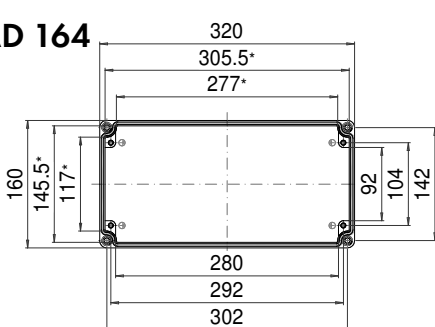
AD 162



Maximum number of cable glands per enclosure side			
A	B	C/D	A/B/C/D
PG 7	12	5	
M 16	PG 9	9	4
	PG 11	7	3
M 20	PG 13,5	7	3
	PG 16	6	2
M 25	PG 21		
M 32	PG 29		
M 40	PG 36		
M 50	PG 42		
M 63	PG 48		

* Please note: Mould slope for casting ejection, dimensions in the amount of the bottom!

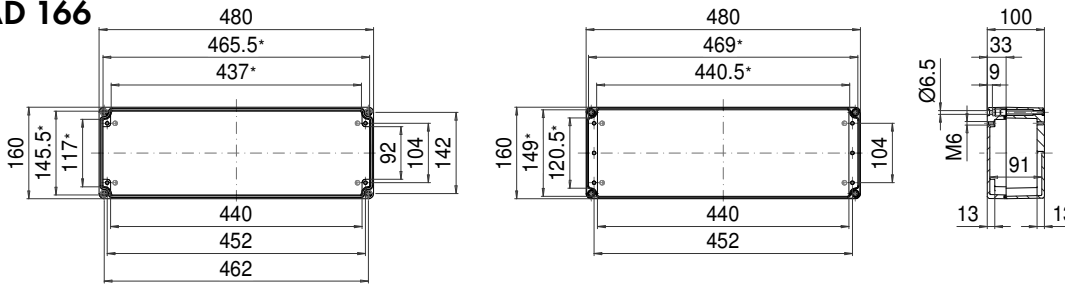
AD 164



Maximum number of cable glands per enclosure side			
A	B	C/D	A/B/C/D
PG 7	17	5	
M 16	PG 9	12	4
	PG 11	10	3
M 20	PG 13,5	9	3
	PG 16	8	2
M 25	PG 21		
M 32	PG 29		
M 40	PG 36		
M 50	PG 42		
M 63	PG 48		

* Please note: Mould slope for casting ejection, dimensions in the amount of the bottom!

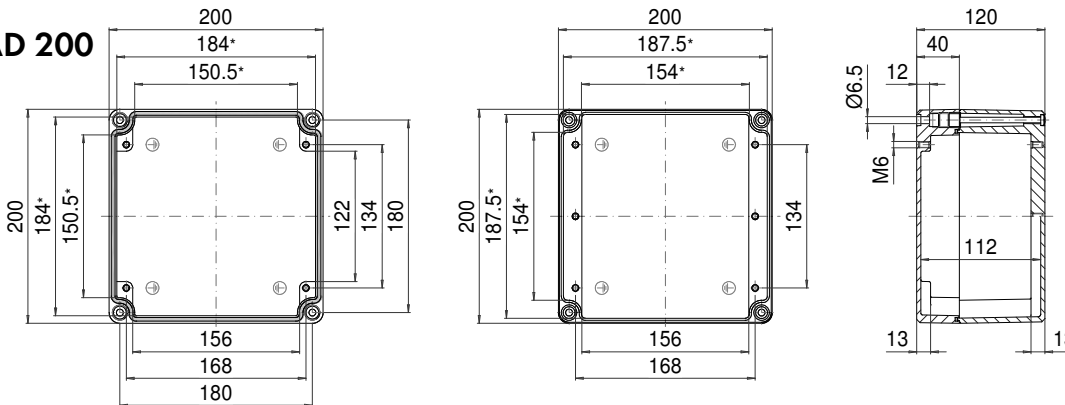
AD 166



Maximum number of cable glands per enclosure side					
A	B	C	D	A/B	C/D
				PG 7	28 5
M 16				PG 9	19 4
				PG 11	16 3
M 20				PG 13,5	13 3
				PG 16	13 2
M 25				PG 21	
M 32				PG 29	
M 40				PG 36	
M 50				PG 42	
M 63				PG 48	

* Please note: Mould slope for casting ejection, dimensions in the amount of the bottom!

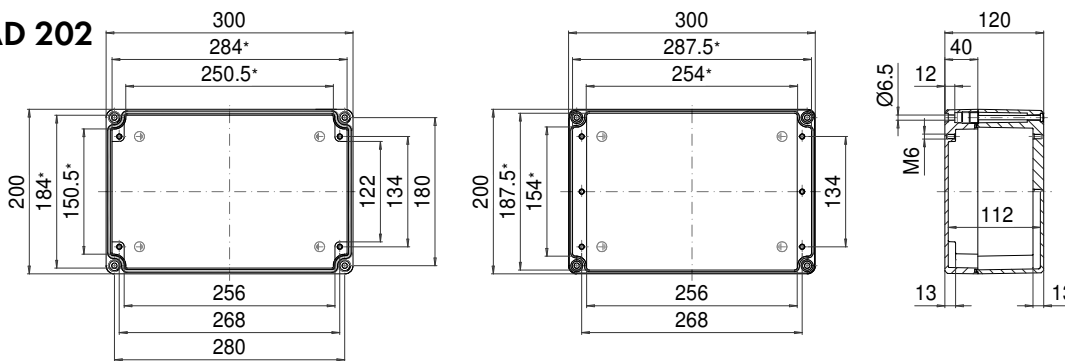
AD 200



Maximum number of cable glands per enclosure side					
A	B	C	D	A/B	C/D
				PG 7	12 11
M 16				PG 9	7 7
				PG 11	5 5
M 20				PG 13,5	5 5
				PG 16	4 4
M 25				PG 21	4 3
M 32				PG 29	
M 40				PG 36	
M 50				PG 42	
M 63				PG 48	

* Please note: Mould slope for casting ejection, dimensions in the amount of the bottom!

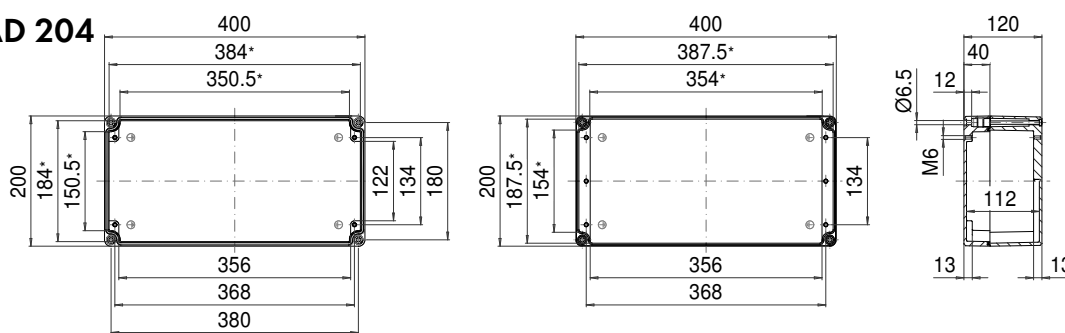
AD 202



Maximum number of cable glands per enclosure side					
A	B	C	D	A/B	C/D
				PG 7	20 11
M 16				PG 9	12 7
				PG 11	9 5
M 20				PG 13,5	9 5
				PG 16	7 4
M 25				PG 21	6 3
M 32				PG 29	
M 40				PG 36	
M 50				PG 42	
M 63				PG 48	

* Please note: Mould slope for casting ejection, dimensions in the amount of the bottom!

AD 204



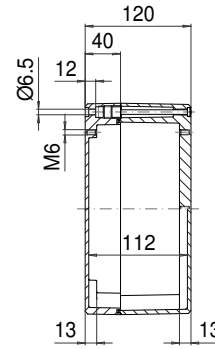
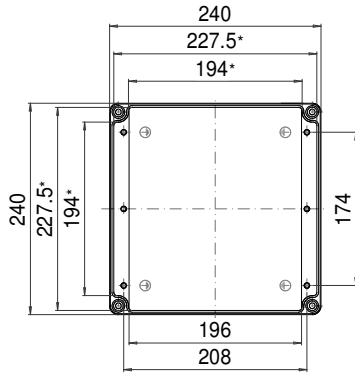
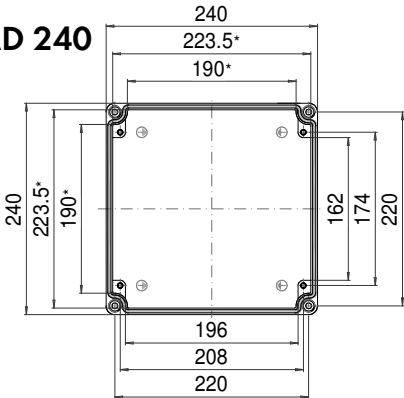
Maximum number of cable glands per enclosure side					
A	B	C	D	A/B	C/D
				PG 7	28 11
M 16				PG 9	17 7
				PG 11	13 5
M 20				PG 13,5	12 5
				PG 16	10 4
M 25				PG 21	9 3
M 32				PG 29	
M 40				PG 36	
M 50				PG 42	
M 63				PG 48	

* Please note: Mould slope for casting ejection, dimensions in the amount of the bottom!

ROLEC Attachment and mounting dimensions

aluNORM AD/AH

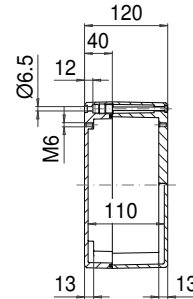
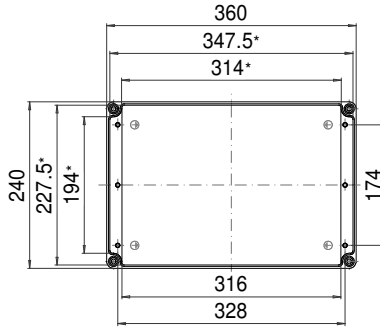
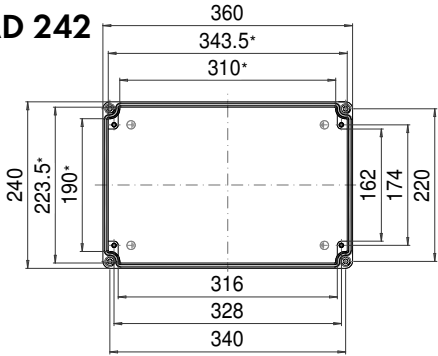
AD 240



Maximum number of cable glands per enclosure side			
A	B	C/D	A/B/C/D
M 16	PG 7	15	15
	PG 9	9	9
	PG 11	7	7
M 20	PG 13,5	6	6
	PG 16	5	5
M 25	PG 21	5	4
M 32	PG 29		
M 40	PG 36		
M 50	PG 42		
M 63	PG 48		

* Please note: Mould slope for casting ejection, dimensions in the amount of the bottom!

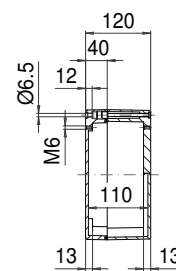
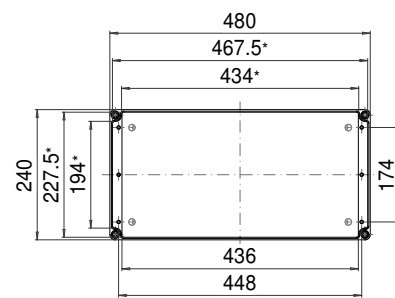
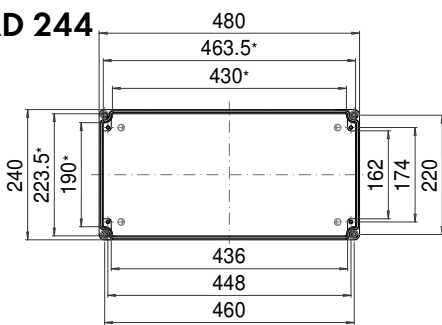
AD 242



Maximum number of cable glands per enclosure side			
A	B	C/D	A/B/C/D
M 16	PG 7	25	15
	PG 9	15	9
	PG 11	11	7
M 20	PG 13,5	11	6
	PG 16	9	5
M 25	PG 21	8	4
M 32	PG 29		
M 40	PG 36		
M 50	PG 42		
M 63	PG 48		

* Please note: Mould slope for casting ejection, dimensions in the amount of the bottom!

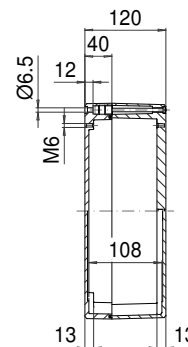
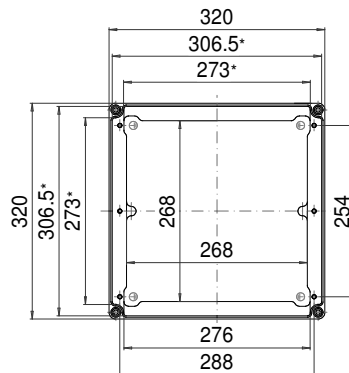
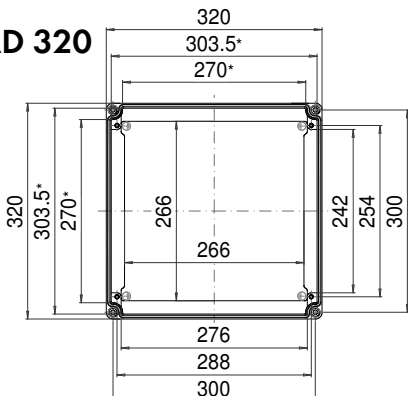
AD 244



Maximum number of cable glands per enclosure side			
A	B	C/D	A/B/C/D
M 16	PG 7	34	15
	PG 9	20	9
	PG 11	16	7
M 20	PG 13,5	15	6
	PG 16	12	5
M 25	PG 21	11	4
M 32	PG 29		
M 40	PG 36		
M 50	PG 42		
M 63	PG 48		

* Please note: Mould slope for casting ejection, dimensions in the amount of the bottom!

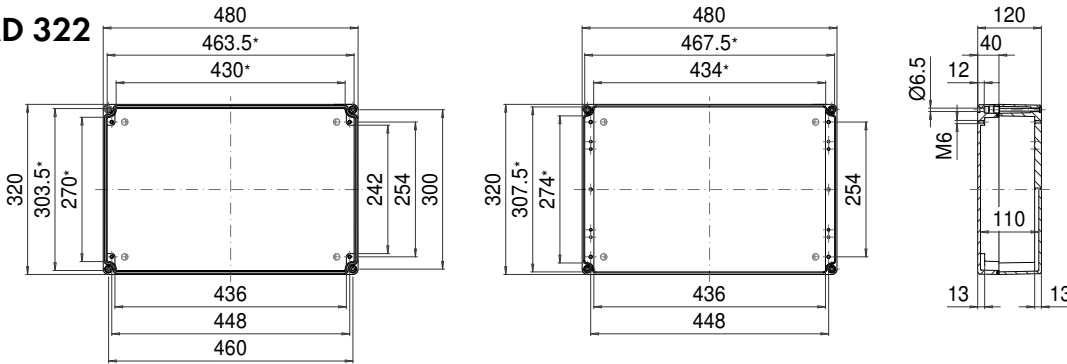
AD 320



Maximum number of cable glands per enclosure side			
A	B	C/D	A/B/C/D
M 16	PG 7	21	21
	PG 9	13	13
	PG 11	10	10
M 20	PG 13,5	10	9
	PG 16	8	7
M 25	PG 21	7	6
M 32	PG 29		
M 40	PG 36		
M 50	PG 42		
M 63	PG 48		

* Please note: Mould slope for casting ejection, dimensions in the amount of the bottom!

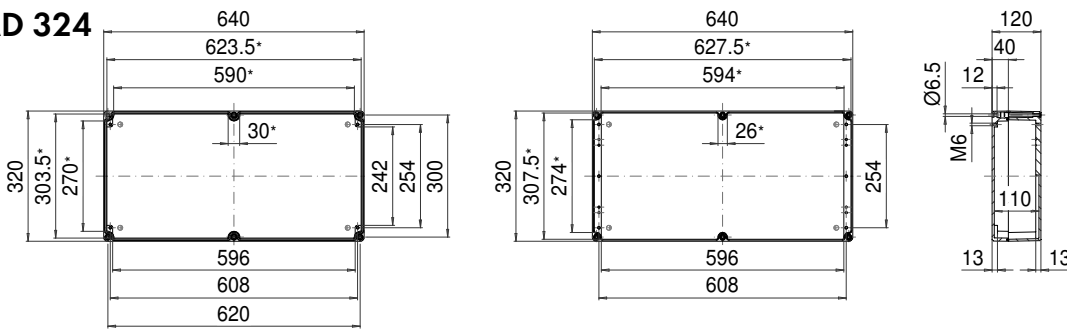
AD 322



* Please note: Mould slope for casting ejection, dimensions in the amount of the bottom!

Maximum number of cable glands per enclosure side			
A	B	C	D
PG 7	34	21	
M 16	PG 9	21	13
	PG 11	16	10
M 20	PG 13,5	15	9
	PG 16	12	7
M 25	PG 21	11	6
M 32	PG 29		
M 40	PG 36		
M 50	PG 42		
M 63	PG 48		

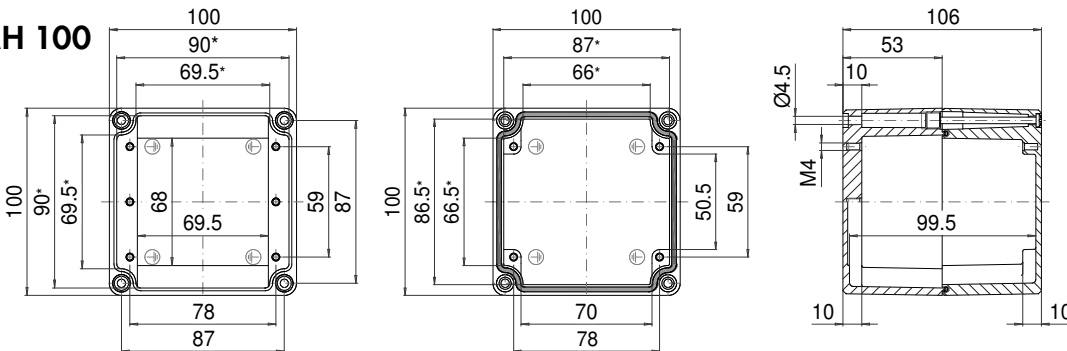
AD 324



* Please note: Mould slope for casting ejection, dimensions in the amount of the bottom!

Maximum number of cable glands per enclosure side			
A	B	C	D
PG 7	44	21	
M 16	PG 9	28	13
	PG 11	20	10
M 20	PG 13,5	20	9
	PG 16	16	7
M 25	PG 21	14	6
M 32	PG 29		
M 40	PG 36		
M 50	PG 42		
M 63	PG 48		

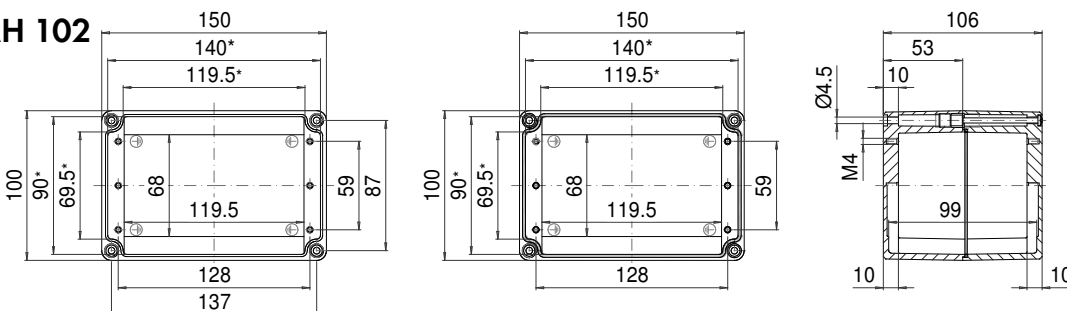
AH 100



* Please note: Mould slope for casting ejection, dimensions in the amount of the bottom!

Maximum number of cable glands per enclosure side			
A	B	C	D
PG 7	11	8	
M 16	PG 9	6	5
	PG 11	5	3
M 20	PG 13,5	4	3
	PG 16	2	2
M 25	PG 21	2	2
M 32	PG 29	1	1
M 40	PG 36		
M 50	PG 42		
M 63	PG 48		

AH 102



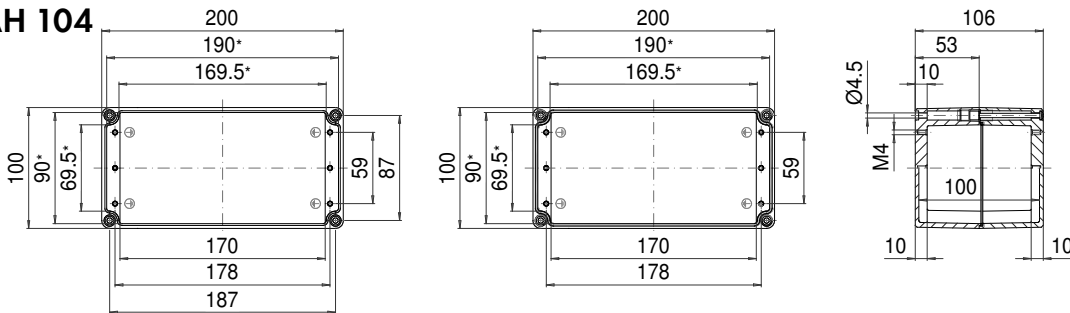
* Please note: Mould slope for casting ejection, dimensions in the amount of the bottom!

Maximum number of cable glands per enclosure side			
A	B	C	D
PG 7	18	8	
M 16	PG 9	10	5
	PG 11	8	3
M 20	PG 13,5	6	3
	PG 16	4	2
M 25	PG 21	3	2
M 32	PG 29	2	1
M 40	PG 36		
M 50	PG 42		
M 63	PG 48		

ROLEC Attachment and mounting dimensions

alUNORM AH

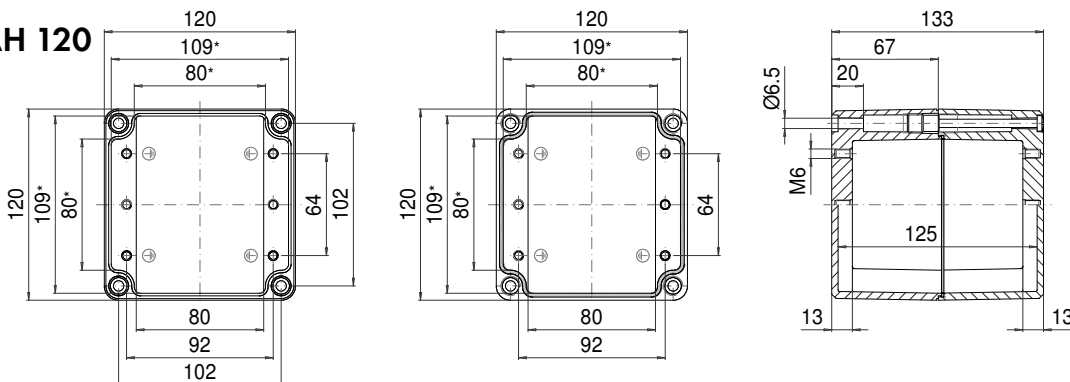
AH 104



* Please note: Mould slope for casting ejection, dimensions in the amount of the bottom!

Maximum number of cable glands per enclosure side			
C	A B D	A/B/C/D	
		PG 7	26
M 16	PG 9	18	5
	PG 11	12	3
M 20	PG 13,5	9	3
	PG 16	6	2
M 25	PG 21	4	2
M 32	PG 29	3	
M 40	PG 36		
M 50	PG 42		
M 63	PG 48		

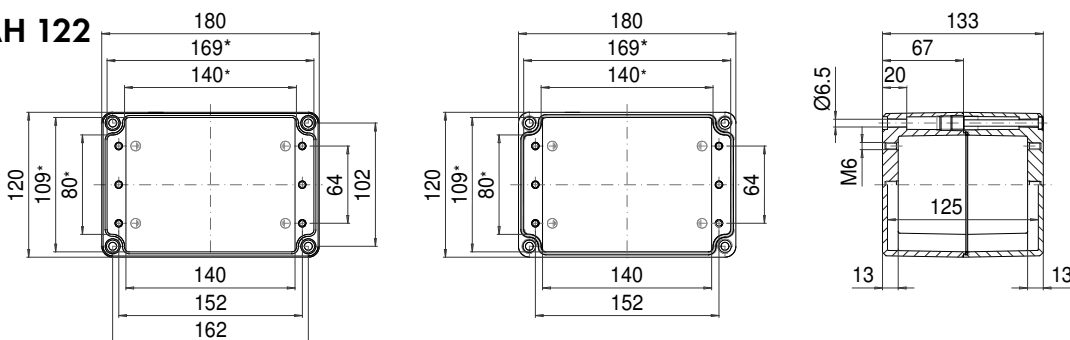
AH 120



* Please note: Mould slope for casting ejection, dimensions in the amount of the bottom!

Maximum number of cable glands per enclosure side			
C	A B D	A/B/C/D	
		PG 7	14
M 16	PG 9	11	8
	PG 11	6	6
M 20	PG 13,5	6	6
	PG 16	4	3
M 25	PG 21	3	2
M 32	PG 29	1	1
M 40	PG 36	1	1
M 50	PG 42		
M 63	PG 48		

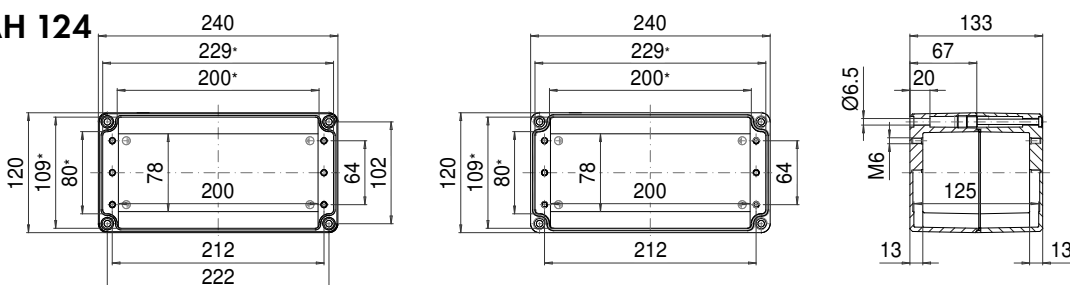
AH 122



* Please note: Mould slope for casting ejection, dimensions in the amount of the bottom!

Maximum number of cable glands per enclosure side			
C	A B D	A/B/C/D	
		PG 7	26
M 16	PG 9	18	8
	PG 11	11	6
M 20	PG 13,5	10	6
	PG 16	8	3
M 25	PG 21	5	2
M 32	PG 29	3	1
M 40	PG 36	2	1
M 50	PG 42		
M 63	PG 48		

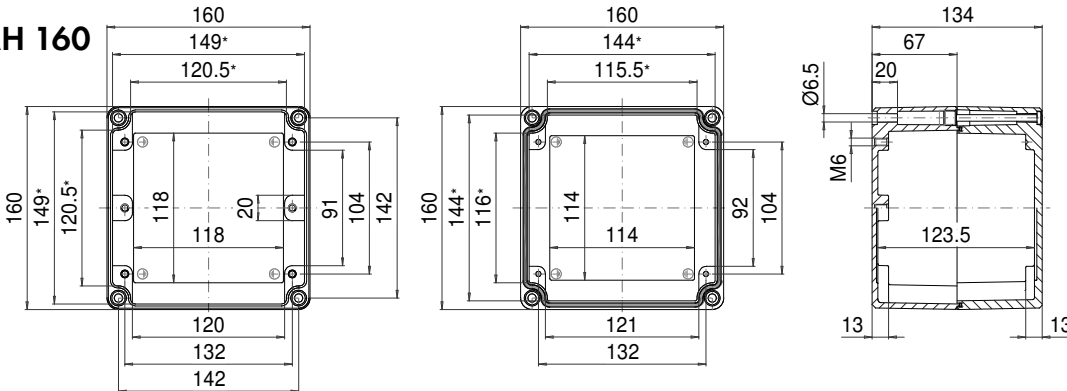
AH 124



* Please note: Mould slope for casting ejection, dimensions in the amount of the bottom!

Maximum number of cable glands per enclosure side			
C	A B D	A/B/C/D	
		PG 7	40
M 16	PG 9	26	8
	PG 11	17	6
M 20	PG 13,5	14	6
	PG 16	12	3
M 25	PG 21	7	2
M 32	PG 29	4	1
M 40	PG 36	3	1
M 50	PG 42		
M 63	PG 48		

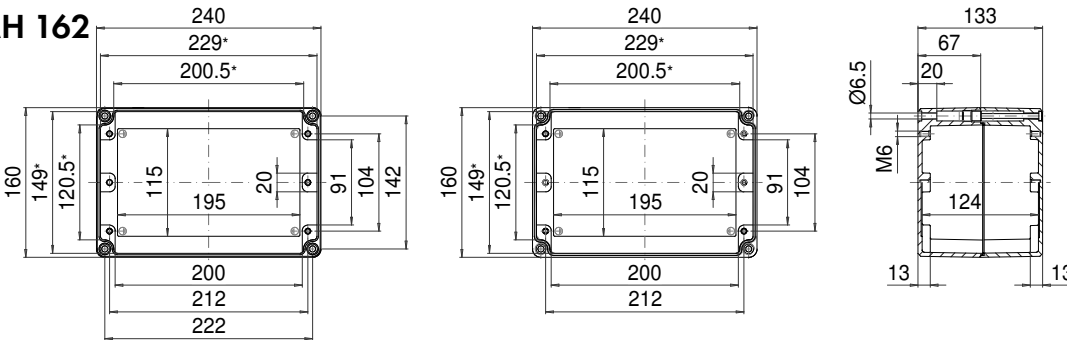
AH 160



Maximum number of cable glands per enclosure side			
A	B	C	D
PG 7	22	18	
M 16	PG 9	15	12
	PG 11	9	8
M 20	PG 13,5	8	8
	PG 16	6	4
M 25	PG 21	4	3
M 32	PG 29	2	2
M 40	PG 36	2	2
M 50	PG 42		
M 63	PG 48		

* Please note: Mould slope for casting ejection, dimensions in the amount of the bottom!

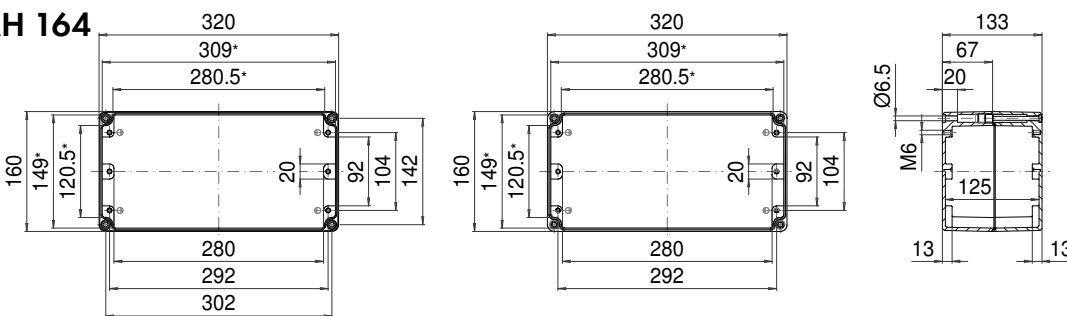
AH 162



Maximum number of cable glands per enclosure side			
A	B	C	D
PG 7	40	18	
M 16	PG 9	26	12
	PG 11	17	8
M 20	PG 13,5	14	8
	PG 16	12	4
M 25	PG 21	7	3
M 32	PG 29	4	2
M 40	PG 36	3	2
M 50	PG 42		
M 63	PG 48		

* Please note: Mould slope for casting ejection, dimensions in the amount of the bottom!

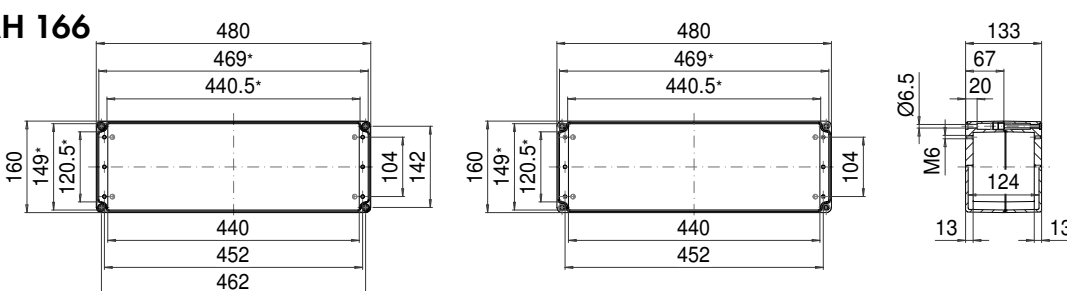
AH 164



Maximum number of cable glands per enclosure side			
A	B	C	D
PG 7	56	18	
M 16	PG 9	36	12
	PG 11	23	8
M 20	PG 13,5	18	8
	PG 16	16	4
M 25	PG 21	10	3
M 32	PG 29	6	2
M 40	PG 36	4	2
M 50	PG 42		
M 63	PG 48		

* Please note: Mould slope for casting ejection, dimensions in the amount of the bottom!

AH 166



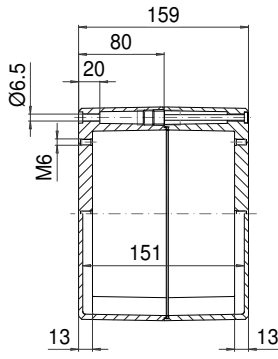
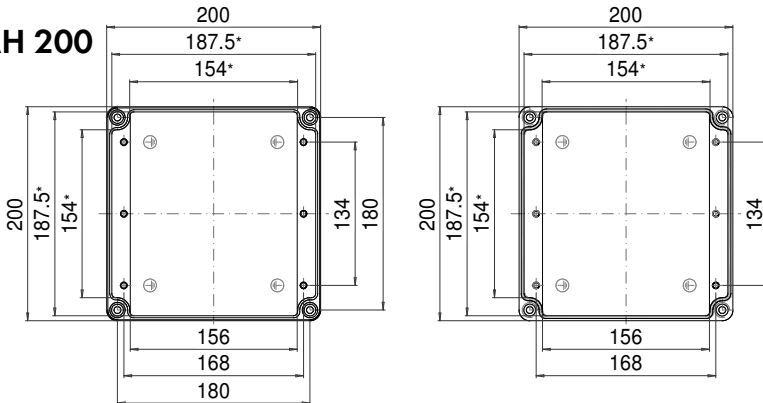
Maximum number of cable glands per enclosure side			
A	B	C	D
PG 7	86	18	
M 16	PG 9	57	12
	PG 11	36	8
M 20	PG 13,5	30	8
	PG 16	26	4
M 25	PG 21	16	3
M 32	PG 29	10	2
M 40	PG 36	7	2
M 50	PG 42		
M 63	PG 48		

* Please note: Mould slope for casting ejection, dimensions in the amount of the bottom!

ROLEC Attachment and mounting dimensions

aluNORM AH

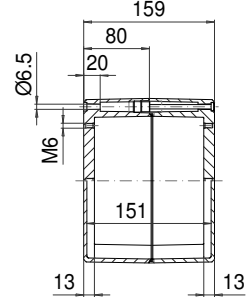
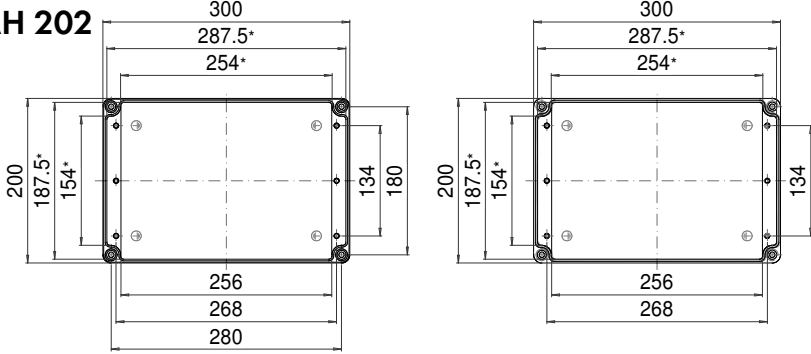
AH 200



Maximum number of cable glands per enclosure side			
A	B	C/D	A/B/C/D
PG 7	30	30	
M 16	PG 9	21	21
	PG 11	18	12
M 20	PG 13,5	14	11
	PG 16	9	9
M 25	PG 21	8	5
M 32	PG 29	4	3
M 40	PG 36	2	2
M 50	PG 42		
M 63	PG 48		

* Please note: Mould slope for casting ejection, dimensions in the amount of the bottom!

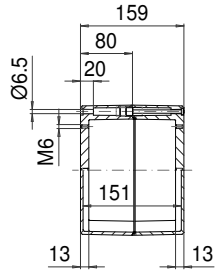
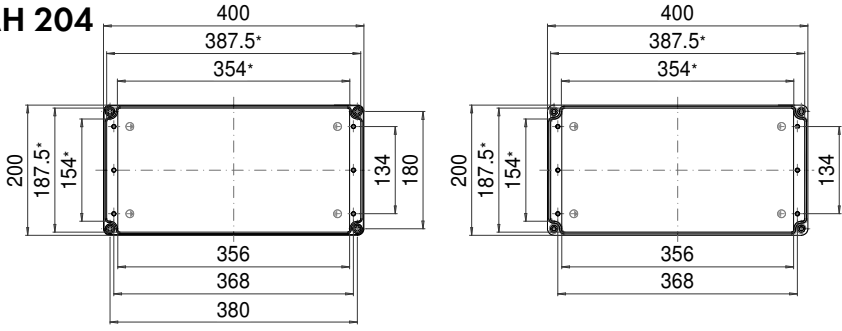
AH 202



Maximum number of cable glands per enclosure side			
A	B	C/D	A/B/C/D
PG 7	50	30	
M 16	PG 9	33	21
	PG 11	27	12
M 20	PG 13,5	21	11
	PG 16	15	9
M 25	PG 21	13	5
M 32	PG 29	6	3
M 40	PG 36	4	2
M 50	PG 42		
M 63	PG 48		

* Please note: Mould slope for casting ejection, dimensions in the amount of the bottom!

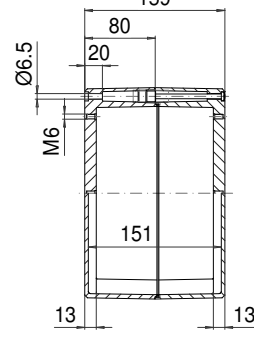
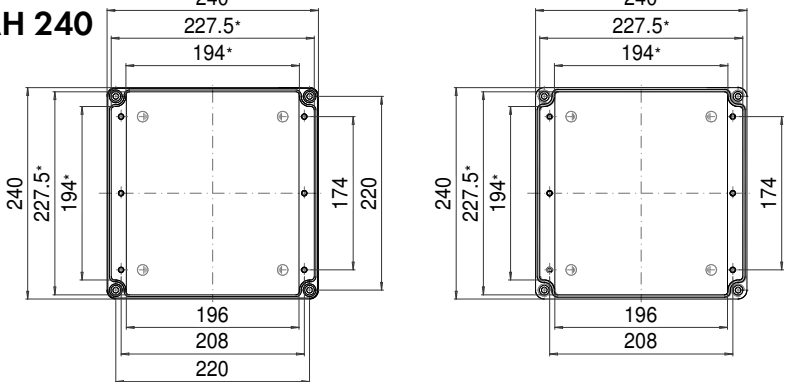
AH 204



Maximum number of cable glands per enclosure side			
A	B	C/D	A/B/C/D
PG 7	70	30	
M 16	PG 9	48	21
	PG 11	39	12
M 20	PG 13,5	30	11
	PG 16	20	9
M 25	PG 21	18	5
M 32	PG 29	9	3
M 40	PG 36	5	2
M 50	PG 42		
M 63	PG 48		

* Please note: Mould slope for casting ejection, dimensions in the amount of the bottom!

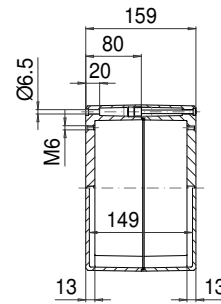
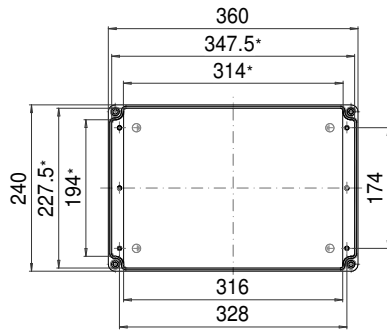
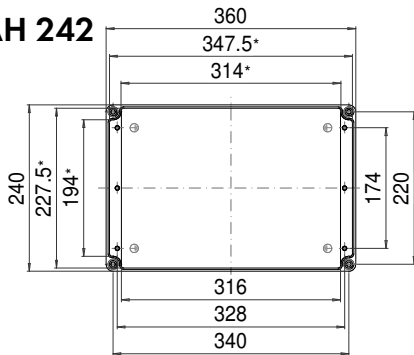
AH 240



Maximum number of cable glands per enclosure side			
A	B	C/D	A/B/C/D
PG 7	38	38	
M 16	PG 9	24	24
	PG 11	21	17
M 20	PG 13,5	17	14
	PG 16	12	12
M 25	PG 21	10	7
M 32	PG 29	5	4
M 40	PG 36	3	3
M 50	PG 42		
M 63	PG 48		

* Please note: Mould slope for casting ejection, dimensions in the amount of the bottom!

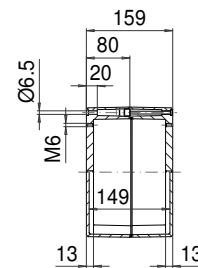
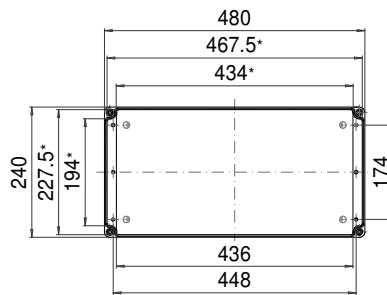
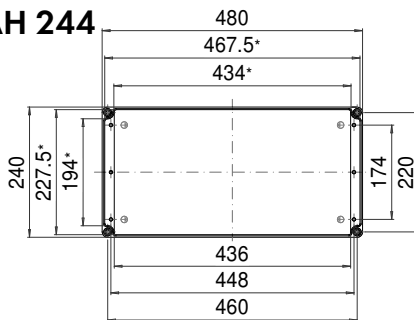
AH 242



Maximum number of cable glands per enclosure side			
A	B	C	D
		PG 7	62 38
M 16		PG 9	45 24
		PG 11	35 17
M 20		PG 13,5	27 14
		PG 16	18 12
M 25		PG 21	16 7
M 32		PG 29	8 4
M 40		PG 36	5 3
M 50		PG 42	
M 63		PG 48	

* Please note: Mould slope for casting ejection, dimensions in the amount of the bottom!

AH 244



Maximum number of cable glands per enclosure side			
A	B	C	D
		PG 7	86 38
M 16		PG 9	60 24
		PG 11	48 17
M 20		PG 13,5	38 14
		PG 16	26 12
M 25		PG 21	22 7
M 32		PG 29	11 4
M 40		PG 36	7 3
M 50		PG 42	
M 63		PG 48	

* Please note: Mould slope for casting ejection, dimensions in the amount of the bottom!

