



Our *passion* is enclosures.



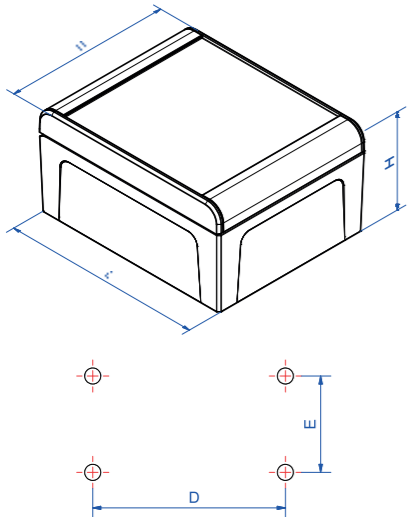
aluDOOR

The new generation enclosure in detail

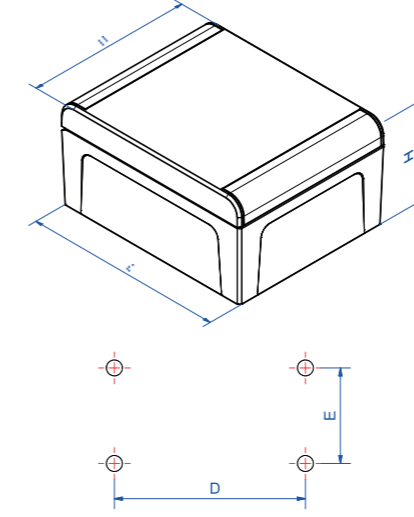
aluDOOR ADF: Series with recessed lid



aluDOOR ADO: Series with flat lid

Type	Art. no.	Length L	Width W	Height H	Weight g	Mounting Dimension D	Mounting Dimension E
ADF 090	133.090.000	120	90	70	600	100	70
ADF 092	133.092.000	160	90	70	705	140	70
ADF 110	133.110.000	140	110	80	785	120	90
ADF 112	133.112.000	200	110	80	975	180	90
ADF 130	133.130.000	160	130	80	945	140	110
ADF 132	133.132.000	220	130	80	1150	200	110
ADF 150	133.150.000	180	150	90	1180	160	130
ADF 152	133.152.000	260	150	90	1490	240	130
ADF 170	133.170.000	200	170	90	1370	180	150
ADF 172	133.172.000	280	170	90	1700	260	150



Type	Art. no.	Length L	Width W	Height H	Weight g	Mounting Dimension D	Mounting Dimension E
ADO 090	134.090.000	120	90	70	605	100	70
ADO 092	134.092.000	160	90	70	710	140	70
ADO 110	134.110.000	140	110	80	790	120	90
ADO 112	134.112.000	200	110	80	980	180	90
ADO 130	134.130.000	160	130	80	950	140	110
ADO 132	134.132.000	220	130	80	1160	200	110
ADO 150	134.150.000	180	150	90	1190	160	130
ADO 152	134.152.000	260	150	90	1500	240	130
ADO 170	134.170.000	200	170	90	1380	180	150
ADO 172	134.172.000	280	170	90	1710	260	150

Everything that makes installation simpler has been thought of.



The lid can be fastened to the enclosure with two screws if necessary.



Stainless steel threaded bushes pressed in for a corrosion-free connection.



M4 fastening pillars in the enclosure base and lid.



Wide (100°) lid opening angle for easy access.



Snap-in aluminium cover trims hide all the mounting screws.



The injected polyurethane seal provides a high degree of ingress protection: IP 66, IP 67 and IP 69K (optional).



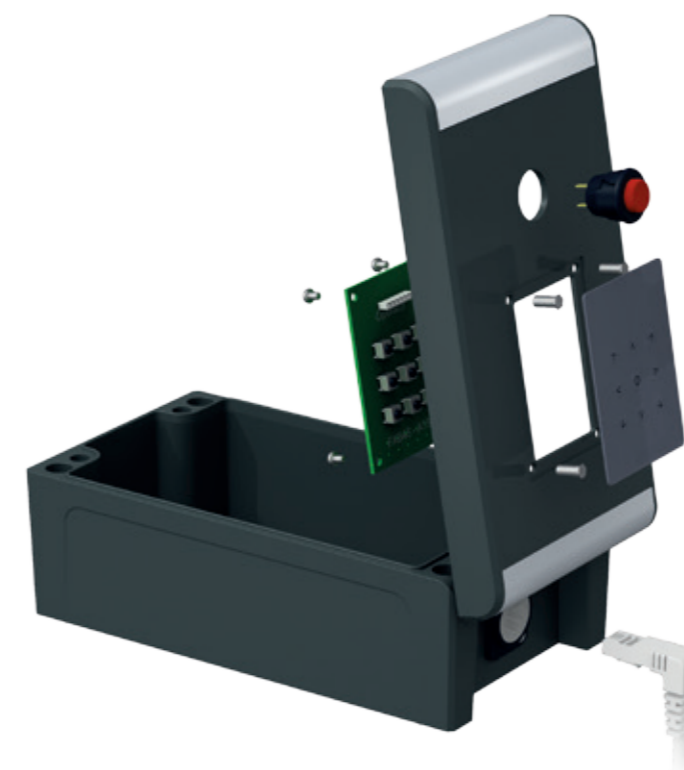
Mounting membrane keypads in the aluDOOR ADF with recessed lid

The 2 mm lid recess allows easy application of membranes and membrane keypads. The PCBs are attached to the mounting pillars in the lid with M4 screws.



Mounting touch panels in the aluDOOR ADF with recessed lid

The recessed lid version has been designed for touch panel installations with a glass thickness of 1.5 mm. Application of the adhesive layer in the lid creates a flush installation. The touch panel is attached using the screw pillars in the lid.



Installation of mechanical switches and circuit boards in the aluDOOR ADO without lid recess (=without grime-collecting edges)

Simple modification of the lid allows mounting of mechanical switches, LEDs and other controls. M4 screw pillars in the lid provide mounting points for these components.



Applying/printing logos and other data on the aluDOOR ADO with flat lid recess (=without grime-collecting edges)

Full-surface digital or screen printing is possible on the flat lid aluDOOR version. This model is also highly suitable for applying device designations.



A competitive advantage right across every sector.

Your device will clearly stand out from your competition right away, thanks to the unique design of the aluDOOR enclosures.

But aluDOOR's unique technology also offers advantages for many industries. Industries and application areas for which the aluDOOR designer enclosures are ideal include:

- Electronics
- Data loggers
- Automation technology
- Flow metering
- Control engineering
- Railway technology
- Ship technology
- Sensor and detection technology
- Machinery/plant construction
- Safety engineering
- Communications engineering
- Environmental technology
- Meteorology
- Automotive engineering
- E-charging station construction
- IOT device construction



Our passion is enclosures.



ROLEC
Gehäuse-Systeme GmbH
Kreuzbreite 2
D-31737 Rinteln

Phone +49 (0) 5751 4003-0
Fax +49 (0) 5751 4003-50
info@rolec.de
www.rolec.de

