

# Inquiry form profiPANEL-profiPLUS

**Customer:**

**Contact partner:**

**Phone:**

**Email address:**

**Quantity/p.a.:**

**Target price:**

**Enclosure depth 210mm**



## Standard execution

Enclosure:	Extruded profiles, silver anodised
Front plate fixed:	3mm, silver anodised
Rear wall front frame:	3mm, silver anodised with lock and hinge
Rear wall desk:	3mm, silver anodised, screwed
Lock and hinge:	Powder coating, silver metallic
Edge cover:	Polyamid (PA), RAL7035
Ingress protection:	IP65 / EN 60529
Temperature range:	-20°C up to +60°C
External dimension HxW max.:	800 x 800mm
External dimension HxW min.:	250 x 250mm

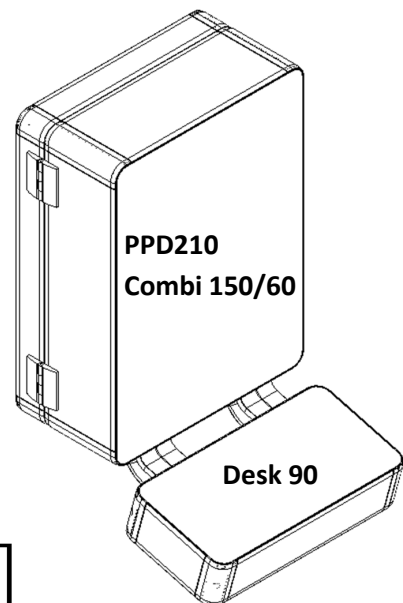
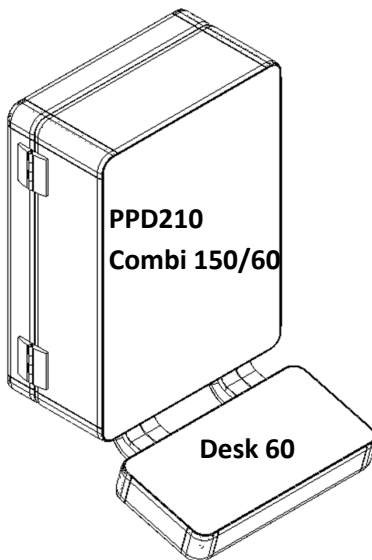
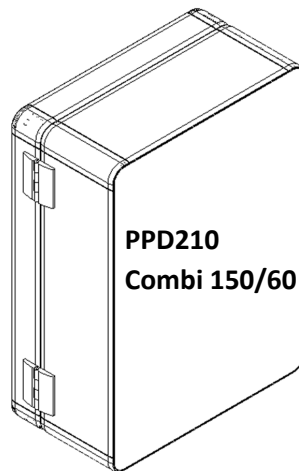
# profiPANEL

Enclosure depth 210mm  
(max. mounting depth 204mm)



Our passion is enclosures.

## Enclosure combination



1 x Cable bushing for desk  
(left side) max. 45x28mm

# profiPANEL

**Enclosure depth 210mm  
(max. mounting depth 204mm)**



Our passion is enclosures.

## Enclosure / Desk dimensions high x width

Enclosure HxW: \_\_\_\_\_ mm

Desk HxW: \_\_\_\_\_ mm

Dimensions by installed equipment

## HMI Panel

**SIEMENS**

**BECKHOFF**



**Rockwell  
Automation**

**ICP iEi**  
INDUSTRIAL COMPUTER PRODUCTS

**Schneider**  
Electric

**ASEM**  
DIGITAL AUTOMATION TECHNOLOGIES

**ADVANTECH**

**OMRON**

Type/part.-no. \_\_\_\_\_

Others \_\_\_\_\_

Type/part.-no. \_\_\_\_\_

**Circulation of air distance consider?**

Yes

No

Further installed equipment / machining e.g. switch, push button and so on:

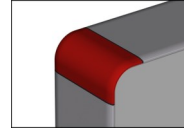


Our passion is enclosures.

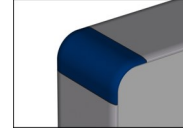
### Accessories (optional)

Special colours for edge cover

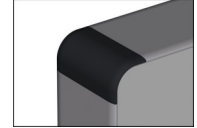
RAL 3020  
Traffic red



RAL 5017  
Traffic blue



RAL 9005  
Deep black



### Handle system

PPD210 Desk



both side



complete



Desk

PPD210



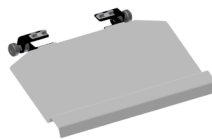
below



both side

### Keyboard tray

Standard (450mm)



Tilt, lockably



Mouse tray only with  
keyboard tray

### Printing for front plate

(Printing file necessary)





Our passion is enclosures.

**Mounting on suspension system profiPLUS 50**

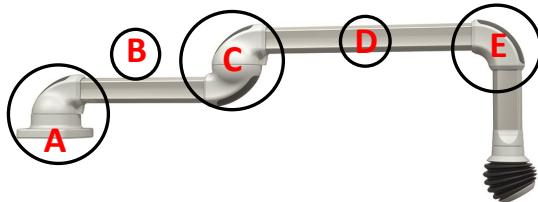
Upright version \*\*

Hanging version \*\*

\*\* Mounting only on the demant front frame

**Horizontal installation** Please note: Maximum system length 2 m

\*Not for over-head assembling



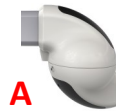
\*Wall joint



\*Socket joint



\*Wall joint smart



\*Socket joint smart

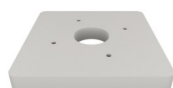


**Optional:**

Universal wall joint adjustment smart



Universal socket joint adjustment smart

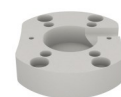


**ITEM/Bosch:**

Socket joint profile adjustment smart



Wall joint profile adjustment smart



**Support profile B**

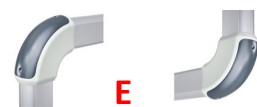
- 250mm
- 500mm
- 750mm
- 1000mm
- 1500mm
- \_\_\_\_\_mm



Intermediate joint

**Support profile D**

- 250mm
- 500mm
- 750mm
- 1000mm
- 1500mm
- \_\_\_\_\_mm



Elbow



Signal light adaption



Our passion is enclosures.

## Vertical installation



**\*\*It's not allowed with intermediate joint!**

### Support profile **B**

250mm

500mm

750mm

1000mm

1500mm

\_\_\_\_\_mm



### Support profile **C**

250mm

500mm

\_\_\_\_\_mm



### Support profile **F**

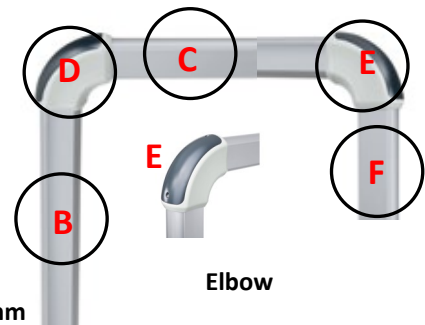
250mm

500mm

750mm

1000mm

\_\_\_\_\_mm

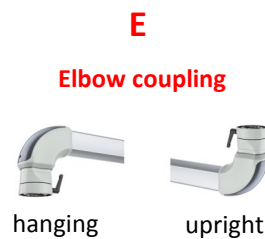
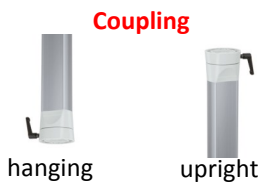


**D**  
Signal light adaption **D**

**E**  
Signal light adaption **E**

## Enclosure couplings

**\*Please note: Couplings with tilt adjustment for desk versions on request!**



## Profile length **F**

L = 250mm

L = 500mm

L = 750mm

L = 1000mm

L = \_\_\_\_\_mm